

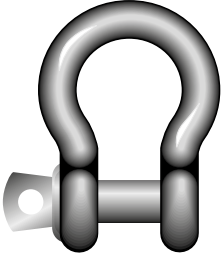
Green Pin U Tipi Mapa Kilit

Green Pin Dee Shackles with Screw Collar Pin

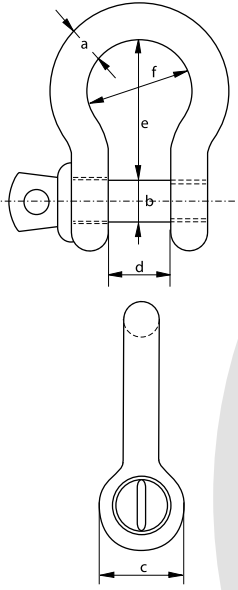
- Malzeme / Material
- Malzeme Yüzeyi / Finish
- Sertifika / Certification

Sert çelik, işlem görmemiş, grade 3 / Mild steel, untreated, grade 3
Elektro-galvanizli / Electro-galvanized

2.1



E-1161



Gövde Çapı	Pim Çapı	Göz Çapı	Ağız Açıklığı	İç Uzunluk	İç Çap	Birim Ağırlık
Diameter Bow	Diameter Pin	Diameter Eye	Width Inside	Length Inside	Width Bow	Weight per 100 pcs
a	b	c	d	e	f	100 Ad/kg
mm	mm	mm	mm	mm	mm	
5	5	10	10	20	15	1,4
6	6	12	12	24	18	2,4
8	8	16	16	32	24	5,4
10	10	20	20	40	30	10,6
11	11	22	22	44	33	16,4
12	12	24	24	48	36	19,4
14	14	28	28	56	42	44
16	16	32	32	64	48	44,2
19	19	38	38	76	57	82,8
22	22	44	44	88	66	116
25	25	50	50	100	75	168
28	28	56	56	112	84	232
32	32	64	64	128	96	382
38	38	76	76	152	114	623