

Green Pin Mapa Kilit Omega Vidalı

Green Pin Bow Shackles with Screw Collar Pin

- **Malzeme / Material**
- **Emniyet Katsayısı / Safety Factor**
- **Standart / Standard**

- **Malzeme Yüzevi / Finish**
- **Sıcaklık Aralığı / Temperature Range**
- **Sertifika / Certification**

Gövde ve pim yüksek mukavemetli kalite sınıfı 6 çelikten dövme imal edilmiştir
Bow and pin high tensile steel, Grade 6, quenched and tempered

Emniyet katsayısı 6:1'dir / MBL equals 6 x WLL

EN 13889, US Fed.Spec.RR-C-271 tip IV A Class 2, Grade A ve ASME B30.26 standartlarına uygundur / EN 13889 and meets performance requirements of US Fed. Spec. RR-C-271 Type IVA Class 2, Grade A from 2 t and upward these shackles comply with ASME B30.26

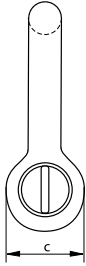
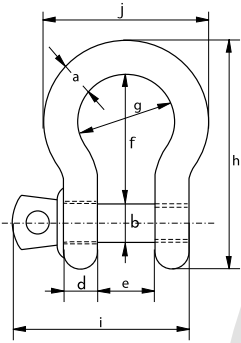
Sıcak daldırma galvaniz / Hot dipped galvanized

-40°C ile +200°C arasında kullanılabilir / -40°C up to +200°C

2.1 2.2 3.1 MTC^a DNV GL 0378 CE ABS PDA ABS MA



G-4161



Taşıma Kapasitesi	Gövde Çapı	Pim Çapı	Göz Çapı	Göz Kalınlığı	Ağız Açıklığı	İç Uzunluk	İç Çap	Dış Boy	Pim Uzunluğu	Genişlik	Birim Ağırlık
WLL	Diameter Bow	Diameter Pin	Diameter Eye	Width Eye	Width Inside	Length Inside	Width Bow	Length	Length Bolt	Width	Weight Each
t	a	b	c	d	e	f	g	h	i	j	Ad/kg
0,33	5	6	12	5	9,5	22	16	36	29,5	26	0,02
0,5	7	8	16,5	7	12	29	20	48,5	38	34	0,05
0,75	9	10	20	9	13,5	32	22	56	46,5	40	0,10
1	10	11	22,5	10	17	36,5	26	63,5	54	46	0,14
1,5	11	13	26,5	11	19	43	29	74	59,5	51	0,19
2	13,5	16	34	13	22	51	32	89	73	58	0,36
3,25	16	19	40	16	27	64	43	110	89	75	0,63
4,75	19	22	46	19	31	76	51	129	103	89	1,01
6,5	22	25	52	22	36	83	58	144	119	102	1,50
8,5	25	28	59	25	43	95	68	164	137	118	2,21
9,5	28	32	66	28	47	108	75	185	153	131	3,16
12	32	35	72	32	51	115	83	201	170	147	4,31
13,5	35	38	80	35	57	133	92	227	186	162	5,55
17	38	42	88	38	60	146	99	249	203	175	7,43
25	45	50	103	45	74	178	126	300	243	216	12,84
35	50	57	111	50	83	197	138	331	272	238	18,15
42,5	57	65	130	57	95	222	160	377	310	274	26,29
55	65	70	145	65	105	260	180	433	344	310	37,60

Taşıma Kapasitesi	Gövde Çapı	Pim Çapı	Göz Çapı	Göz Kalınlığı	Ağız Açıklığı	İç Uzunluk	İç Çap	Dış Boy	Pim Uzunluğu	Genişlik	Birim Ağırlık
WLL	Diameter Bow	Diameter Pin	Diameter Eye	Width Eye	Width Inside	Length Inside	Width Bow	Length	Length Bolt	Width	Weight Each
t	a	b	c	d	e	f	g	h	i	j	lbs
0,33	3/16	1/4	1/2	3/16	3/8	7/8	5/8	1 13/32	1 5/32	1 1/32	0,05
0,5	1/4	5/16	21/32	9/32	15/32	1 5/32	25/32	1 29/32	1 1/2	1 11/32	0,11
0,75	5/16	3/8	25/32	11/32	17/32	1 1/4	7/8	2 7/32	1 27/32	1 9/16	0,22
1	3/8	7/16	7/8	13/32	21/32	1 7/16	1 1/32	2 1/2	2 1/8	1 13/16	0,30
1,5	7/16	1/2	1 1/32	7/16	3/4	1 11/16	1 5/32	2 29/32	2 11/32	2	0,42
2	1/2	5/8	1 11/32	1/2	7/8	2	1 1/4	3 1/2	2 7/8	2 9/32	0,79
3,25	5/8	3/4	1 9/16	5/8	1 1/16	2 17/32	1 11/16	4 11/32	3 1/2	2 15/16	1,38
4,75	3/4	7/8	1 13/16	3/4	1 7/32	3	2	5 3/32	4 1/16	3 1/2	2,22
6,5	7/8	1	2 1/16	7/8	1 13/32	3 9/32	2 9/32	5 21/32	4 11/16	4 1/32	3,31
8,5	1	1 1/8	2 5/16	31/32	1 11/16	3 3/4	2 11/16	6 15/32	5 13/32	4 21/32	4,86
9,5	1 1/8	1 1/4	2 19/32	1 3/32	1 27/32	4 1/4	2 15/16	7 9/32	6 1/32	5 5/32	6,97
12	1 1/4	1 3/8	2 27/32	1 1/4	2	4 17/32	3 9/32	7 29/32	6 11/16	5 25/32	9,49
13,5	1 3/8	1 1/2	3 5/32	1 3/8	2 1/4	5 1/4	3 5/8	8 15/16	7 5/16	6 3/8	12,24
17	1 1/2	1 5/8	3 15/32	1 1/2	2 3/8	5 3/4	3 29/32	9 15/16	8	6 7/8	16,37
25	1 3/4	2	4 1/16	1 25/32	2 29/32	7	4 31/32	11 13/16	9 9/16	8 1/2	28,31
35	2	2 1/4	4 3/8	1 31/32	3 9/32	7 3/4	5 7/16	13 1/32	10 23/32	9 3/8	40,01
42,5	2 1/4	2 9/16	5 1/8	2 1/4	3 3/4	8 3/4	6 5/16	14 27/32	12 7/32	10 25/32	57,96
55	2 1/2	2 3/4	5 23/32	2 9/16	4 1/8	10 1/4	7 3/32	17 1/16	13 17/32	12 7/32	82,89

* Taşıma kapasitesi 2 tondan büyük olan mapalar için / For shackles ≥ WLL 2 t

RFID CAD

