

Green Pin Mapa Kilit Omega Somunlu Kopilyalı

Green Pin Bow Shackles with Safety Bolt

• Malzeme / Material

• Emniyet Katsayısı / Safety Factor

• Standart / Standard

• Malzeme Yüzevi / Finish

• Sıcaklık Aralığı / Temperature Range

• Sertifika / Certification

Gövde ve pim yüksek mukavemetli kalite sınıfı 6 çelikten dövme imal edilmiştir

Bow and pin high tensile steel, Grade 6, quenched and tempered

Emniyet katsayısı 6:1'dir / MBL equals 6 x WLL

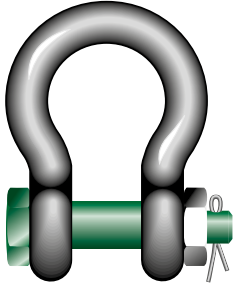
EN 13889, US Fed.Spec.RR-C-271 tip IV A Class 3, Grade A ve ASME B30.26 standartlarına uygundur / EN 13889 and meets performance requirements of US Fed. Spec. RR-C-271

Type IV A Class 3, Grade A from 2 t and upward these shackles comply with ASME B30.26

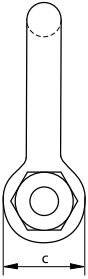
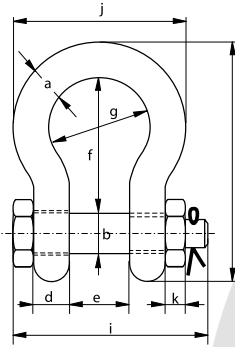
Sıcak daldırma galvaniz / Hot dipped galvanized

-40°C ile +200°C arasında kullanılabilir / -40°C up to +200°C

2.1 2.2 3.1 MTC<sup>a</sup> DNV GL 2.7-1<sup>a</sup> DNV GL 2.7-1<sup>b</sup> CE ABS PDA ABS MA



G-4163



Taşıma Kapasitesi	Gövde Çapı	Pim Çapı	Göz Çapı	Göz Kalınlığı	Ağız Açıklığı	İç Uzunluk	İç Çap	Dış Boy	Pim Uzunluğu	Genişlik	Somun Kalınlığı	Birim Ağırlık
WLL	Diameter Bow	Diameter Pin	Diameter Eye	Width Eye	Width Inside	Length Inside	Width Bow	Length	Length Bolt	Width	Thickness Nut	Weight Each
t	a	b	c	d	e	f	g	h	i	j	k	Ad/kg
0,5	7	8	16,5	7	12	29	20	48,5	42	34	4	0,06
0,75	9	10	20	9	13,5	32	22	56	50	40	5	0,11
1	10	11	22,5	10	17	36,5	26	63,5	60	46	8	0,16
1,5	11	13	26,5	11	19	43	29	74	67	51	11	0,22
2	13,5	16	34	13	22	51	32	89	82	58	13	0,42
3,25	16	19	40	16	27	64	43	110	98	75	17	0,74
4,75	19	22	46	19	31	76	51	129	114	89	19	1,18
6,5	22	25	52	22	36	83	58	144	130	102	22	1,77
8,5	25	28	59	25	43	95	68	164	150	118	25	2,58
9,5	28	32	66	28	47	108	75	185	166	131	27	3,66
12	32	35	72	32	51	115	83	201	178	147	30	4,91
13,5	35	38	80	35	57	133	92	227	197	162	33	6,54
17	38	42	88	38	60	146	99	249	202	175	19	8,19
25	45	50	103	45	74	178	126	300	249	216	23	14,22
35	50	57	111	50	83	197	138	331	269	238	26	19,53
42,5	57	65	130	57	95	222	160	377	301	274	29	28,33
55	65	70	145	65	105	260	180	433	330	310	32	39,59
85	75	83	162	73	127	329	190	527	380	340	39	62,00

Taşıma Kapasitesi	Gövde Çapı	Pim Çapı	Göz Çapı	Göz Kalınlığı	Ağız Açıklığı	İç Uzunluk	İç Çap	Dış Boy	Pim Uzunluğu	Genişlik	Somun Kalınlığı	Birim Ağırlık
WLL	Diameter Bow	Diameter Pin	Diameter Eye	Width Eye	Width Inside	Length Inside	Width Bow	Length	Length Bolt	Width	Thickness Nut	Weight Each
t	a	b	c	d	e	f	g	h	i	j	k	lbs
0,5	1/4	5/16	21/32	9/32	15/32	1 5/32	25/32	1 29/32	1 21/32	1 11/32	5/32	0,13
0,75	5/16	3/8	25/32	11/32	17/32	1 1/4	7/8	2 7/32	1 31/32	1 9/16	3/16	0,25
1	3/8	7/16	7/8	13/32	21/32	1 7/16	1 1/32	2 1/2	2 3/8	1 13/16	5/16	0,34
1,5	7/16	1/2	1 1/32	7/16	3/4	1 11/16	1 5/32	2 29/32	2 5/8	2	7/16	0,48
2	1/2	5/8	1 11/32	1/2	7/8	2	1 1/4	3 1/2	3 7/32	2 9/32	1/2	0,92
3,25	5/8	3/4	1 9/16	5/8	1 1/16	2 17/32	1 11/16	4 11/32	3 27/32	2 15/16	21/32	1,62
4,75	3/4	7/8	1 13/16	3/4	1 7/32	3	2	5 3/32	4 1/2	3 1/2	3/4	2,59
6,5	7/8	1	2 1/16	7/8	1 13/32	3 9/32	2 9/32	5 21/32	5 1/8	4 1/32	7/8	3,9
8,5	1	1 1/8	2 5/16	31/32	1 11/16	3 3/4	2 11/16	6 15/32	5 29/32	4 21/32	31/32	5,69
9,5	1 1/8	1 1/4	2 19/32	1 3/32	1 27/32	4 1/4	2 15/16	7 9/32	6 17/32	5 5/32	1 1/16	8,06
12	1 1/4	1 3/8	2 27/32	1 1/4	2	4 17/32	3 9/32	7 29/32	7	5 25/32	1 3/16	10,81
13,5	1 3/8	1 1/2	3 5/32	1 3/8	2 1/4	5 1/4	3 5/8	8 15/16	7 3/4	6 3/8	1 5/16	14,42
17	1 1/2	1 5/8	3 15/32	1 1/2	2 3/8	5 3/4	3 29/32	9 13/16	7 15/16	6 7/8	3/4	18,06
25	1 3/4	2	4 1/16	1 25/32	2 29/32	7	4 31/32	11 13/16	9 13/16	8 1/2	29/32	31,34
35	2	2 1/4	4 3/8	1 31/32	3 9/32	7 3/4	5 7/16	13 1/32	10 19/32	9 3/8	1 1/32	43,77
42,5	2 1/4	2 9/16	5 1/8	2 1/4	3 3/4	8 3/4	6 5/16	14 27/32	11 27/32	10 23/32	1 5/32	62,46
55	2 1/2	2 3/4	5 23/32	2 9/16	4 1/8	10 1/4	7 3/32	17 1/16	13	12 7/32	1 1/4	87,27
85	3	3 1/4	6 3/8	2 7/8	5	12 15/16	7 15/32	20 3/4	14 31/32	13 3/8	1 17/32	136,69



\* Taşıma kapasitesi 2 tondan büyük olan mapalar için / For shackles ≥ WLL 2 t

RFID CAD