

Green Pin Omega Tipi Mapa Kilit Kare Vidalı

Green Pin Bow Shackles with Square Headed Screw Pin

- Malzeme / Material
- Emniyet Katsayısı / Safety Factor
- Standart / Standard

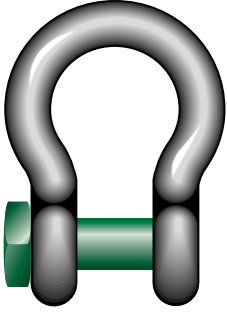
Gövde ve pim yüksek mukavemetli kalite sınıfı 6 çelikten dövme imal edilmiştir
Bow and pin high tensile steel, Grade 6, quenched and tempered

Emniyet katsayısı 6:1'dir / MBL equals 6 x WLL

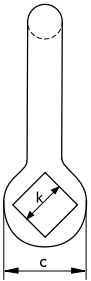
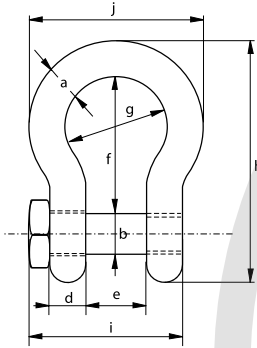
EN 13889, US Fed.Spec.RR-C-271 tip IV A Class 2, Grade A ve ASME B30.26 standartlarına uygundur / EN 13889 and meets performance requirements of US Fed. Spec. RR-C-271 Type IVA Class 2, Grade A from 2 t and upward these shackles comply with ASME B30.26

Sıcak daldırma galvaniz / Hot dipped galvanize

2.1 2.2 3.1 MTC^a CE



G-4164



| Taşıma Kapasitesi | Gövde Çapı | Pim Çapı | Göz Çapı | Göz Kalınlığı | Ağız Açıklığı | İç Uzunluk | İç Çap | Dış Boy | Pim Uzunluğu | Genişlik | Pim Kalınlığı | Birim Ağırlık |
|-------------------|--------------|--------------|--------------|---------------|---------------|---------------|-----------|---------|--------------|----------|-----------------|---------------|
| WLL | Diameter Bow | Diameter Pin | Diameter Eye | Width Eye | Width Inside | Length Inside | Width Bow | Length | Length Bolt | Width | Width Bolt Head | Weight Each |
| t | a | b | c | d | e | f | g | h | i | j | k | Ad/kg |
| 2 | 13,5 | 16 | 34 | 13 | 22 | 51 | 32 | 89 | 57,5 | 58 | 22 | 0,34 |
| 3,25 | 16 | 19 | 40 | 16 | 27 | 64 | 43 | 110 | 71 | 75 | 27 | 0,63 |
| 4,75 | 19 | 22 | 46 | 19 | 31 | 76 | 51 | 129 | 82 | 89 | 32 | 1 |
| 6,5 | 22 | 25 | 52 | 22 | 36 | 83 | 58 | 144 | 93 | 102 | 32 | 1,44 |
| 8,5 | 25 | 28 | 59 | 25 | 43 | 95 | 68 | 164 | 108 | 118 | 36 | 2,21 |
| 9,5 | 28 | 32 | 66 | 28 | 47 | 108 | 75 | 185 | 120 | 131 | 41 | 3,18 |
| 12 | 32 | 35 | 72 | 32 | 51 | 115 | 83 | 201 | 137 | 147 | 50 | 4,32 |
| 13,5 | 35 | 38 | 80 | 35 | 57 | 133 | 92 | 227 | 149 | 162 | 50 | 5,67 |
| 17 | 38 | 42 | 88 | 38 | 60 | 146 | 99 | 249 | 164 | 175 | 60 | 7,36 |
| 25 | 45 | 50 | 103 | 45 | 74 | 178 | 126 | 300 | 192 | 216 | 60 | 12,38 |

| Taşıma Kapasitesi | Gövde Çapı | Pim Çapı | Göz Çapı | Göz Kalınlığı | Ağız Açıklığı | İç Uzunluk | İç Çap | Dış Boy | Pim Uzunluğu | Genişlik | Pim Kalınlığı | Birim Ağırlık |
|-------------------|--------------|--------------|--------------|---------------|---------------|---------------|-----------|----------|--------------|----------|-----------------|---------------|
| WLL | Diameter Bow | Diameter Pin | Diameter Eye | Width Eye | Width Inside | Length Inside | Width Bow | Length | Length Bolt | Width | Width Bolt Head | Weight Each |
| t | a | b | c | d | e | f | g | h | i | j | k | lbs |
| 2 | 1/2 | 5/8 | 1 11/32 | 1/2 | 7/8 | 2 | 1 1/4 | 3 1/2 | 2 1/4 | 2 9/32 | 7/8 | 0,75 |
| 3,25 | 5/8 | 3/4 | 1 9/16 | 5/8 | 1 1/16 | 2 17/32 | 1 11/16 | 4 11/32 | 2 25/32 | 2 15/16 | 1 1/16 | 1,39 |
| 4,75 | 3/4 | 7/8 | 1 13/16 | 3/4 | 1 7/32 | 3 | 2 | 5 3/32 | 3 7/32 | 3 1/2 | 1 1/4 | 2,21 |
| 6,5 | 7/8 | 1 | 2 1/16 | 7/8 | 1 13/32 | 3 9/32 | 2 9/32 | 5 21/32 | 3 21/32 | 4 1/32 | 1 1/4 | 3,17 |
| 8,5 | 1 | 1 1/8 | 2 5/16 | 31/32 | 1 11/16 | 3 3/4 | 2 11/16 | 6 15/32 | 4 1/4 | 4 21/32 | 1 13/32 | 4,86 |
| 9,5 | 1 1/8 | 1 1/4 | 2 19/32 | 1 3/32 | 1 31/32 | 4 1/4 | 2 15/16 | 7 9/32 | 4 23/32 | 5 5/32 | 1 5/8 | 7,01 |
| 12 | 1 1/4 | 1 3/8 | 2 27/32 | 1 1/4 | 2 | 4 17/32 | 3 9/32 | 7 29/32 | 5 13/32 | 5 25/32 | 1 31/32 | 9,52 |
| 13,5 | 1 3/8 | 1 1/2 | 3 5/32 | 1 3/8 | 2 1/4 | 5 1/4 | 3 5/8 | 8 15/16 | 5 7/8 | 6 3/8 | 1 31/32 | 12,49 |
| 17 | 1 1/2 | 1 5/8 | 3 15/32 | 1 1/2 | 2 3/8 | 5 3/4 | 3 29/32 | 9 13/16 | 6 15/32 | 6 7/8 | 2 3/8 | 16,23 |
| 25 | 1 3/4 | 2 | 4 1/16 | 1 25/32 | 2 29/32 | 7 | 4 31/32 | 11 13/16 | 7 9/16 | 8 1/2 | 2 3/8 | 27,29 |