

Green Pin Omega Tipi Mapa Kilit Kare Delikli

Green Pin Bow Shackles with Square Sunken Hole Screw Pin (Flush Pin)

• **Malzeme / Material**

Gövde ve pim yüksek mukavemetli kalite sınıfı 6 çelikten dövme imal edilmiştir
Bow and pin high tensile steel, Grade 6, quenched and tempered

• **Emniyet Katsayısı / Safety Factor**

Emniyet katsayısı 6:1'dir / MBL equals 6 x WLL

• **Standart / Standard**

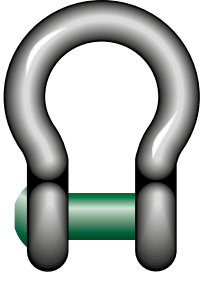
EN 13889, US Fed.Spec.RR-C-271 tip IV A Class 2, Grade A ve ASME B30.26 standartlarına uygundur / EN 13889 and meets performance requirements of US Fed. Spec. RR-C-271 Type IVA Class 2, Grade A from 2 t and upward these shackles comply with ASME B30.26

• **Malzeme Yüzevi / Finish**

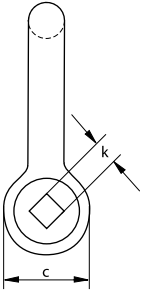
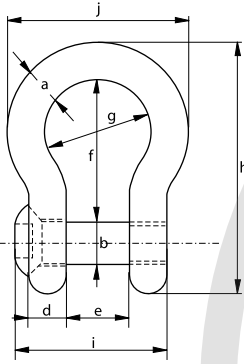
Sıcak daldırma galvaniz / Hot dipped galvanize

• **Sertifika / Certification**

2.1 2.2 3.1 MTC^a CE



G-4169



Taşıma Kapasitesi	Gövde Çapı	Pim Çapı	Göz Çapı	Göz Kalınlığı	Ağız Açıklığı	İç Uzunluk	İç Çap	Dış Boy	Pim Uzunluğu	Genişlik	Delik Boyutu	Birim Ağırlık
WLL	Diameter Bow	Diameter Pin	Diameter Eye	Width Eye	Width Inside	Length Inside	Width Bow	Length	Length Bolt	Width	Size Hole Head	Weight Each
t	a	b	c	d	e	f	g	h	i	j	k	Ad/kg
2	13,5	16	34	13	22	51	32	89	51	58	11	0,31
3,25	16	19	40	16	27	64	43	110	63	75	11	0,56
4,75	19	22	46	19	31	76	51	129	74	89	11	0,98
6,5	22	25	52	22	36	83	58	144	85	102	13	1,46
8,5	25	28	59	25	43	95	68	164	99	118	13	2,18
9,5	28	32	66	28	47	108	75	185	110	131	17	3,06
12	32	35	72	32	51	115	83	201	122	147	17	4,24
17	38	42	88	38	60	146	99	249	145	175	17	7,37

Taşıma Kapasitesi	Gövde Çapı	Pim Çapı	Göz Çapı	Göz Kalınlığı	Ağız Açıklığı	İç Uzunluk	İç Çap	Dış Boy	Pim Uzunluğu	Genişlik	Delik Boyutu	Birim Ağırlık
WLL	Diameter Bow	Diameter Pin	Diameter Eye	Width Eye	Width Inside	Length Inside	Width Bow	Length	Length Bolt	Width	Size Hole Head	Weight Each
t	a	b	c	d	e	f	g	h	i	j	k	lbs
2	1/2	5/8	1 11/32	1/2	7/8	2	1 1/4	3 1/2	2	2 9/32	7/16	0,68
3,25	5/8	3/4	1 9/16	5/8	1 1/16	2 17/32	1 11/16	4 11/32	2 15/32	2 15/16	7/16	1,23
4,75	3/4	7/8	1 15/16	3/4	1 7/32	3	2	5 3/32	2 29/32	3 1/2	7/16	2,16
6,5	7/8	1	2 1/16	7/8	1 13/32	3 9/32	2 9/32	5 21/32	3 11/32	4 1/32	1/2	3,22
8,5	1	1 1/8	2 5/16	31/32	1 11/16	3 3/4	2 11/16	6 15/32	3 29/32	4 21/32	1/2	4,81
9,5	1 1/8	1 1/4	2 19/32	1 3/32	1 27/32	4 1/4	2 15/16	7 9/32	4 11/32	5 5/32	21/32	6,75
12	1 1/4	1 3/8	2 27/32	1 1/4	2	4 17/32	3 9/32	7 29/32	4 13/16	5 25/32	21/32	9,35
17	1 1/2	1 5/8	3 15/32	1 1/2	2 3/8	5 3/4	3 29/32	9 13/16	5 23/32	6 7/8	21/32	16,25