

### Green Pin Geniş Ağızlı Omega Mapa Kilitler Somunlu Kopilyalı

Green Pin Wide Mouth Shackles with Safety Bolt

• Malzeme / Material

Gövde ve pim yüksek mukavemetli kalite sınıfı 8 çelikten dövme imal edilmiştir

Bow and pin alloy steel, Grade 8, quenched and tempered

• Emniyet Katsayısı / Safety Factor

Emniyet katsayısı 6:1'dir / MBL equals 6 x WLL

• Standart / Standard

ASME B30.26 / ASME B30.26

• Malzeme Yüzeği / Finish

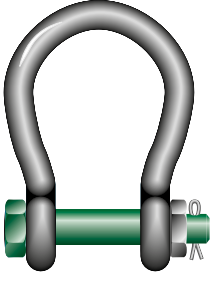
Sıcak daldırma galvaniz / Hot dipped galvanized

• Sıcaklık Aralığı / Temperature Range

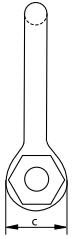
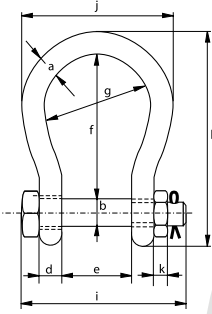
-20°C ile +200°C arasında kullanılabilir / -20°C up to +200°C

• Sertifika / Certification

2.1 2.2 3.1 MTC<sup>a</sup> CE



G-4263



| Taşıma Kapasitesi | Gövde Çapı   | Pim Çapı     | Göz Çapı     | Göz Kalınlığı | Ağız Açıklığı | İç Uzunluk    | İç Çap    | Dış Boy | Pim Uzunluğu | Genişlik | Somun Kalınlığı | Birim Ağırlık |
|-------------------|--------------|--------------|--------------|---------------|---------------|---------------|-----------|---------|--------------|----------|-----------------|---------------|
| WLL               | Diameter Bow | Diameter Pin | Diameter Eye | Width Eye     | Width Inside  | Length Inside | Width Bow | Length  | Length Bolt  | Width    | Thickness Nut   | Weight Each   |
| t                 | a            | b            | c            | d             | e             | f             | g         | h       | i            | j        | k               | Ad/kg         |
| 4,75              | 22           | 25           | 52           | 22            | 63            | 112           | 88        | 173     | 157          | 132      | 23              | 2,08          |
| 6,5               | 25           | 28           | 59           | 25            | 75            | 135           | 105       | 204     | 183          | 155      | 25              | 3,14          |
| 8,5               | 28           | 32           | 66           | 28            | 82            | 148           | 115       | 225     | 205          | 171      | 27              | 4,36          |
| 9,5               | 32           | 35           | 72           | 32            | 90            | 162           | 126       | 248     | 224          | 190      | 30              | 5,95          |
| 12                | 35           | 38           | 79           | 35            | 100           | 180           | 140       | 274     | 245          | 210      | 33              | 7,87          |
| 16                | 38           | 42           | 88           | 38            | 106           | 216           | 159       | 319     | 248          | 235      | 19              | 12,5          |
| 25                | 45           | 50           | 103          | 45            | 127           | 248           | 175       | 370     | 296          | 265      | 23              | 16,7          |
| 30                | 50           | 57           | 118          | 50            | 146           | 273           | 207       | 411     | 332          | 307      | 26              | 25            |
| 55                | 65           | 70           | 145          | 65            | 165           | 314           | 213       | 487     | 391          | 343      | 32              | 45            |
| 75                | 83           | 83           | 164          | 83            | 184           | 330           | 254       | 537     | 460          | 420      | 39              | 77            |

| Taşıma Kapasitesi | Gövde Çapı   | Pim Çapı     | Göz Çapı     | Göz Kalınlığı | Ağız Açıklığı | İç Uzunluk    | İç Çap    | Dış Boy  | Pim Uzunluğu | Genişlik | Somun Kalınlığı | Birim Ağırlık |
|-------------------|--------------|--------------|--------------|---------------|---------------|---------------|-----------|----------|--------------|----------|-----------------|---------------|
| WLL               | Diameter Bow | Diameter Pin | Diameter Eye | Width Eye     | Width Inside  | Length Inside | Width Bow | Length   | Length Bolt  | Width    | Thickness Nut   | Weight Each   |
| t                 | a            | b            | c            | d             | e             | f             | g         | h        | i            | j        | k               | lbs           |
| 4,75              | 7/8          | 1            | 2 1/16       | 7/8           | 2 15/32       | 4 13/32       | 3 15/32   | 6 13/16  | 6 3/16       | 5 3/16   | 7/8             | 4,59          |
| 6,5               | 1            | 1 1/8        | 2 5/16       | 31/32         | 2 15/16       | 5 5/16        | 4 1/8     | 8 1/32   | 7 7/32       | 6 3/32   | 31/32           | 6,92          |
| 8,5               | 1 1/8        | 1 1/4        | 2 19/32      | 1 3/32        | 3 7/32        | 5 13/16       | 4 17/32   | 8 27/32  | 8 1/16       | 6 23/32  | 1 1/16          | 9,61          |
| 9,5               | 1 1/4        | 1 3/8        | 2 27/32      | 1 1/4         | 3 17/32       | 6 3/8         | 4 31/32   | 9 3/4    | 8 13/16      | 7 15/32  | 1 3/16          | 13,12         |
| 12                | 1 3/8        | 1 1/2        | 3 1/8        | 1 3/8         | 3 15/16       | 7 3/32        | 5 1/2     | 10 25/32 | 9 21/32      | 8 9/32   | 1 5/16          | 17,35         |
| 16                | 1 1/2        | 1 5/8        | 3 15/32      | 1 1/2         | 4 3/16        | 8 1/2         | 6 1/4     | 12 9/16  | 9 3/4        | 9 1/4    | 3/4             | 27,56         |
| 25                | 1 3/4        | 2            | 4 1/16       | 1 25/32       | 5             | 9 3/4         | 6 7/8     | 14 9/16  | 11 21/32     | 10 7/16  | 29/32           | 36,82         |
| 30                | 2            | 2 1/4        | 4 21/32      | 1 31/32       | 5 3/4         | 10 3/4        | 8 5/32    | 16 3/16  | 13 1/16      | 12 3/32  | 1 1/32          | 55,12         |
| 55                | 2 1/2        | 2 3/4        | 5 23/32      | 2 9/16        | 6 1/2         | 12 3/8        | 8 3/8     | 19 3/16  | 15 13/32     | 13 1/2   | 1 1/4           | 105,82        |
| 75                | 3 1/4        | 3 1/4        | 6 15/32      | 3 9/32        | 7 1/4         | 13            | 10        | 21 5/32  | 18 1/8       | 15 29/32 | 1 17/32         | 169,76        |

RFID CAD