

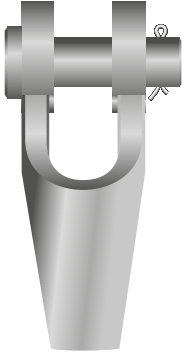
Açık Tip Tutyalı Soket

Open Spelter Socket

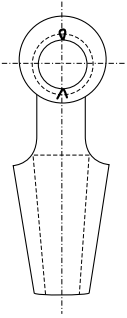
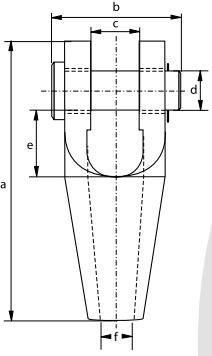
- **Malzeme / Material**
- **Malzeme Yüzeyi / Finish**
- **Sıcaklık Aralığı / Temperature Range**
- **Sertifika / Certification**

Yüksek mukavemetli çelikten imal edilmiştir / High tensile steel
Sıcak daldırma galvaniz / Hot dipped galvanized
-20°C ile +200°C arasında kullanılabilir / -20°C up to +200°C

2.1 2.2 3.1 CE



G-6412



Ürün No	Minimum Kopma Yüğü	Halat Çapı	Yükseklik	Pim Boyu	Göz İç Geniřliđi	Pim Çapı	Göz İç Uzunluđu	Delik Çapı	Birim Ađırlık
Number	Minimum Breaking Load	Diameter Wire Rope	Length	Width	Width Inside	Diameter Pin	Length Inside	Opening	Weight Each
	MBL	mm	a	b	c	d	e	f	kg
	t	mm	mm	mm	mm	mm	mm	mm	kg
196	8	6 - 7	109	51	19	16	33	9	0,4
197	12	8 - 10	124	62	21	21	34	12	0,7
198	20	11 - 13	143	66	26	25	37	15	1
199	25	14 - 16	172	82	33	30	49	18	1,8
100	40	18 - 19	205	95	38	35	58	21	3
104	55	20 - 22	235	110	44	41	68	24	4,6
108	75	23 - 26	275	130	51	51	75	28	8
111	90	27 - 30	306	144	57	57	85	32	11
115	125	31 - 36	338	155	63	64	95	38	16
118	150	37 - 39	394	178	76	70	127	41	22
120	170	40 - 42	418	187	76	76	127	44	27
125	225	43 - 48	468	213	89	89	134	51	41
128	280	49 - 54	552	240	101	95	181	57	64
130	360	55 - 60	598	270	113	108	196	63	88
132	425	61 - 68	654	303	127	121	213	73	125
135	460	69 - 75	696	349	133	127	216	79	155
138	560	76 - 80	737	371	146	133	220	86	187
140	625	81 - 86	788	391	159	140	228	92	230
142	720	87 - 93	852	411	171	152	242	99	265
144	875	94 - 102	914	447	191	178	254	108	400
146	1200	108 - 115	1160	489	206	193	369	125	660

CAD



G-6412