

**Kapalı Tip Kısa Tutyalı Soket**

Closed Spelter Socket

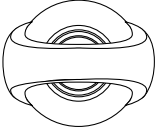
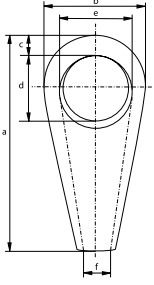
- **Malzeme / Material**
- **Malzeme Yüzeyi / Finish**
- **Sertifika / Certification**

**Yüksek mukavemetli çelik / High tensile steel**  
**Sıcak daldırma galvaniz / Hot dipped galvanized**

**2.1 2.2 3.1 CE**



**G-6416**



Minimum Kopma Yüğü	Halat Çapı	Yükseklik	Üst Genişlik	Göz Et Kalınlığı	Göz Uzunluğu	Göz Genişliği	Delik Çapı	Birim Ağırlık
Minimum Breaking Load	Diameter Wire Rope	Length	Width	Thickness Bow	Length Eye	Width Eye	Opening	Weight Each
MBL t	mm	a mm	b mm	c mm	d mm	e mm	f mm	Ad/kg
140	31-36	262	132	38	83	75	39	7
160	37-42	305	152	40	103	92	44	10
200	43-48	356	178	48	120	112	51	16
250	49-54	390	200	54	132	120	59	21
320	55-60	440	220	62	148	135	64	28
400	61-68	498	250	68	165	150	73	44
500	69-75	540	274	75	178	164	79	53
600	76-80	585	295	76	195	175	89	70
700	81-86	625	320	82	216	194	92	81
800	97-93	670	350	92	220	202	99	112
900	94-102	700	375	100	235	215	108	130
1000	108-115	800	410	110	270	240	120	182