

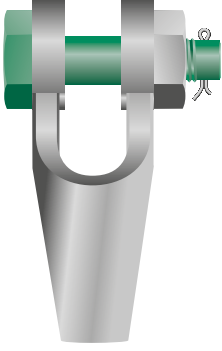
**Açık Tip Tutyalı Soket Somunlu**

Open Spelter Socket with Safety Bolt

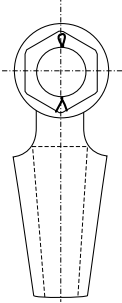
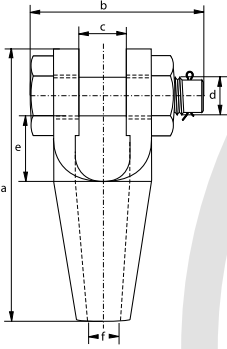
- **Malzeme / Material**
- **Malzeme Yüzeyi / Finish**
- **Sıcaklık Aralığı / Temperature Range**
- **Sertifika / Certification**

**Yüksek mukavemetli çelikten imal edilmiştir / High tensile steel**  
**Sıcak daldırma galvaniz / Hot dipped galvanized**  
**-20°C ile +200°C arasında kullanılabilir / -20°C up to +200°C**

**2.1 2.2 3.1 CE**



**G-6422**



Ürün No	Minimum Kopma Yüğü	Halat Çapı	Yükseklik	Pim Boyu	Göz İç Geniřlięi	Pim Çapı	Göz İç Uzunluęu	Delik Çapı	Birim Aęırlık
Number	Minimum Breaking Load MBL	Diameter Wire Rope	Length	Width	Width Inside	Diameter Pin	Length Inside	Opening	Weight Each
	t	mm	a	b	c	d	e	f	kg
196	8	6 - 7	109	69	19	16	33	9	0,4
197	12	8 - 10	124	83	21	20	35	12	0,8
198	20	11 - 13	143	101	26	25	37	15	1,3
199	25	14 - 16	172	124	33	30	49	18	2,3
100	40	18 - 19	205	138	38	35	58	21	3,7
104	55	20 - 22	235	148	44	41	68	24	4,6
108	75	23 - 26	275	176	51	50	76	28	9,7
111	90	27 - 30	306	193	57	57	85	32	13,6
115	125	31 - 36	338	210	63	63	96	38	16
118	150	37 - 39	394	230	76	70	127	41	26,9
120	170	40 - 42	418	244	76	77	126	44	32

**CAD**



**G-6422**