

Green Pin Omega Sapan Kilidi Somunlu Kopilyalı

Green Pin Sling Shackles with Safety Bolt

• Malzeme / Material

• Emniyet Katsayısı / Safety Factor

• Malzeme Yüzeyi / Finish

• Sıcaklık Aralığı / Temperature Range

• Sertifika / Certification

Gövde ve pim yüksek mukavemetli kalite sınıfı 8 çelikten dövme imal edilmiştir

Bow and pin alloy steel, Grade 8, quenched and tempered

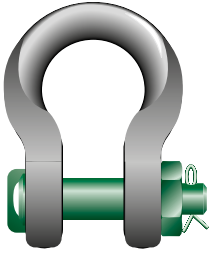
Emniyet katsayısı 5:1'dir / MBL equals 5 x WLL

Gövde gümüş, pim yeşil boyalıdır (7 ile 55 ton arasındaki mapalar sıcak daldırma galvaniz)

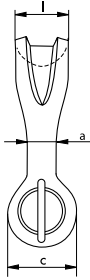
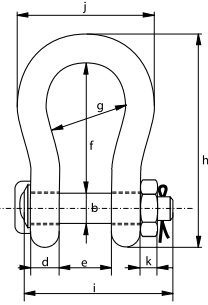
Shackle bow painted silver, pin painted green (7 up 55 ton shackles are hot dipped galvanized)

-20°C ile +200°C arasında kullanılabilir / -20°C up to +200°C

2.1 2.2 3.1 MTC^a LROS^a MPI^b US^b CE



P-6033



Taşıma Kapasitesi	Gövde Çapı	Pim Çapı	Göz Çapı	Göz Kalınlığı	Ağız Açıklığı	İç Uzunluk	İç Çap	Dış Boy	Pim Uzunluğu	Genişlik	Somun Kalınlığı	Taşıma Yüzeyi Genişliği	Birim Ağırlık
WLL	Diameter Body a	Diameter Pin b	Diameter Eye c	Width Eye d	Width Inside e	Length Inside f	Width Bow g	Length h	Length Bolt i	Width j	Thickness Nut k	Bearing Surface l	Weight Each
t	mm	mm	mm	mm	mm	mm	mm	mm	mm	mm	mm	mm	Ad/kg
7	22	22	46	19	32	96	64	153	115	110	19	41	2
12,5	28	28	61	25	44	121	82	197	151	146	24	54	4
18	35	35	69	30	54	148	102	239	175	180	29	64	7
30	40	42	90	35	69	165	126	279	211	200	34	79	13
40	55	51	109	45	84	199	140	331	252	235	38	97	21
55	60	57	115	55	90	240	160	389	299	270	45	100	30
75	68	70	125	54	110	290	185	473	327	317	54	120	48
125	85	80	154	85	137	366	220	583	426	390	64	150	92
150	94	95	179	89	147	391	253	645	435	434	50	170	140
200	110	105	199	100	158	481	280	759	470	482	50	205	205
250	126	120	227	110	179	542	300	859	519	530	60	240	264
300	135	134	245	122	195	601	350	947	575	620	70	265	360
400	160	160	293	145	231	576	370	985	675	690	80	320	580
500	170	180	328	160	263	681	450	1131	748	790	90	359	780
600	190	200	348	170	289	741	490	1234	809	865	100	370	980
700	200	215	392	190	315	751	540	1284	879	901	100	400	1360
800	218	230	420	200	342	851	554	1426	942	947	110	420	1430
900	242	255	466	220	368	851	580	1488	1023	1023	120	440	1650
1000	260	270	490	240	399	851	614	1532	1103	1107	120	460	2970
1250	285	300	510	260	452	931	650	1666	1227	1182	150	530	3700
1550	285	320	550	280	483	950	680	1710	1300	1253	150	560	4000

Taşıma Kapasitesi	Gövde Çapı	Pim Çapı	Göz Çapı	Göz Kalınlığı	Ağız Açıklığı	İç Uzunluk	İç Çap	Dış Boy	Pim Uzunluğu	Genişlik	Somun Kalınlığı	Taşıma Yüzeyi	Birim Ağırlık
WLL	Diameter Body a	Diameter Pin b	Diameter Eye c	Width Eye d	Width Inside e	Length Inside f	Width Bow g	Length h	Length Bolt i	Width j	Thickness Nut k	Bearing Surface l	Weight Each
t	inch	inch	inch	inch	inch	inch	inch	inch	inch	inch	inch	inch	lbs
7	7/8	7/8	1 13/16	3/4	1 9/32	3 25/32	2 17/32	6	4 17/32	4 5/16	3/4	1 5/18	4,41
12,5	1 1/8	1 1/8	2 3/8	1	1 3/4	4 3/4	3 1/4	7 3/4	5 15/16	5 3/4	15/16	2 7/8	8,82
18	1 3/8	1 3/8	2 23/32	1 3/16	2 1/8	5 13/16	4 1/32	9 13/32	6 7/8	7 3/32	1 5/32	2 17/32	18
30	1 9/16	1 21/32	3 17/32	1 3/8	2 23/32	6 1/2	4 31/32	10 31/32	8 5/16	7 7/8	1 11/32	3 1/8	29
40	2 5/32	2	4 9/32	1 25/32	3 5/16	7 27/32	5 1/2	13 1/32	9 29/32	9 1/4	1 1/2	3 13/16	46
55	2 3/8	2 1/4	4 17/32	2 5/32	3 17/32	9 7/16	6 5/16	15 5/16	11 25/32	10 5/8	1 25/32	3 15/16	66
75	2 11/16	2 3/4	4 29/32	2 1/8	4 11/32	11 13/32	7 9/32	18 5/8	12 7/8	12 15/32	2 1/8	4 23/32	106
125	3 11/32	3 5/32	6 1/16	3 11/32	5 13/32	14 13/32	8 21/32	22 15/16	16 25/32	15 11/32	2 17/32	5 29/32	203
150	3 11/16	3 3/4	7 1/16	3 1/2	5 25/32	15 13/32	9 31/32	25 13/32	17 1/8	17 3/32	1 31/32	6 11/16	309
200	4 11/32	4 1/8	7 27/32	3 15/16	6 7/32	18 15/16	11 1/32	29 7/8	18 1/2	18 31/32	1 31/32	8 1/16	452
250	4 31/32	4 23/32	8 15/16	4 11/32	7 1/16	21 11/32	11 13/16	33 13/16	20 7/16	20 7/8	2 3/8	9 7/16	582
300	5 5/16	5 9/32	9 21/32	4 13/16	7 11/16	23 21/32	13 25/32	37 9/32	22 3/8	24 13/32	2 3/4	10 7/16	794
400	6 5/16	6 5/16	11 17/32	5 23/32	9 3/32	22 11/16	14 9/16	38 25/32	26 9/16	27 5/32	3 5/32	12 19/32	1279
500	6 11/16	7 3/32	12 29/32	6 5/16	10 11/32	26 13/16	17 23/32	44 17/32	29 7/16	31 3/32	3 17/32	13 11/32	1720
600	7 15/32	7 7/8	13 11/16	6 11/16	11 3/8	29 3/16	19 9/32	48 19/32	31 27/32	34 1/16	3 15/16	14 9/16	2161
700	7 7/8	8 15/32	15 7/16	7 15/32	12 13/32	29 9/16	21 1/4	50 9/16	34 19/32	35 15/32	3 15/16	15 3/4	2998
800	8 19/32	9 1/16	16 17/32	7 7/8	13 15/32	33 1/2	21 13/16	56 5/32	37 3/32	37 9/32	4 11/32	16 17/32	3153
900	9 17/32	10 1/32	18 11/32	8 21/32	14 1/2	33 1/2	22 27/32	58 19/32	40 9/32	40 9/32	4 23/32	17 5/16	3638
1000	10 1/4	10 5/8	19 9/32	9 7/16	15 23/32	33 1/2	24 3/16	60 5/16	43 7/16	43 19/32	4 23/32	18 1/8	6548
1250	11 7/32	11 13/16	20 3/32	10 1/4	17 25/32	36 21/32	25 19/32	65 19/32	48 5/16	46 17/32	5 29/32	20 7/8	8157
1550	11 1/32	12 19/32	21 21/32	11 1/32	19 1/32	37 13/32	26 25/32	67 5/16	51 3/16	49 11/32	5 29/32	22 1/16	8818

* Taşıma kapasitesi 75 tondan büyük olan mapalar için / For shackles ≥ WLL 75 t