

Green Pin Ağır Tip Omega Mapa Kilit

Green Pin Heavy Duty Bow Shackles with Safety Bolt

• Malzeme / Material

Gövde ve pim yüksek mukavemetli kalite sınıfı 8 çelikten dövme imal edilmiştir

Bow and pin alloy steel, Grade 8, quenched and tempered

• Emniyet Katsayısı / Safety Factor

Emniyet katsayısı 5:1'dir / MBL equals 5 x WLL

• Standart / Standard

ASME B30.26 / ASME B30.26

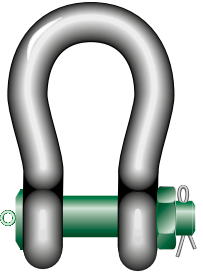
• Malzeme Yüzeyi / Finish

Gövde gümüş, pim yeşil boyalıdır (120 tonluk mapa kilitler sıcak daldırma galvanizdir)

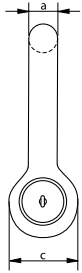
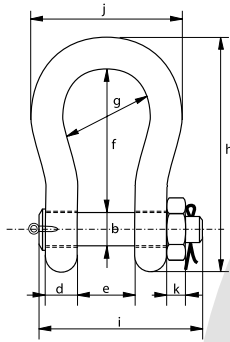
Shackle bow painted silver, pin painted green (120 tons shackle is hot dipped galvanized)

• Sertifika / Certification

2.1 2.2 3.1 MTC^a MTC^b * LROS * MPI^a US^a CE



P-6036



Taşıma Kapasitesi	Gövde Çapı	Pim Çapı	Göz Çapı	Göz Kalınlığı	Ağız Açıklığı	İç Uzunluk	İç Çap	Dış Boy	Pim Uzunluğu	Genişlik	Somun Kalınlığı	Birim Ağırlık
WLL	Diameter Bow a	Diameter Pin b	Diameter Eye c	Width Eye d	Width Inside e	Length Inside f	Width Bow g	Length h	Length Bolt i	Width j	Thickness Nut k	Weight Each
t	mm	mm	mm	mm	mm	mm	mm	mm	mm	mm	mm	Ad/kg
120	95	95	208	91	147	400	238	647	440	428	50	110
150	105	108	238	102	169	410	275	688	490	485	60	160
200	120	130	279	113	179	513	290	838	520	530	60	235
250	130	140	299	118	205	554	305	904	560	565	65	285
300	140	150	325	123	205	618	305	996	575	585	70	340
400	170	175	376	164	231	668	325	1114	690	665	70	560
500	180	185	398	164	256	718	350	1190	720	710	70	685
600	200	205	444	189	282	718	375	1243	810	775	70	880
700	210	215	454	204	308	718	400	1263	870	820	70	980
800	210	220	464	204	308	718	400	1270	870	820	70	1100
900	220	230	485	215	328	718	420	1296	920	860	70	1280
1000	240	240	515	215	349	718	420	1336	940	900	70	1460
1250	260	270	585	230	369	768	450	1456	1025	970	70	1990
1500	280	290	625	230	369	818	450	1556	1025	1010	70	2400

Taşıma Kapasitesi	Gövde Çapı	Pim Çapı	Göz Çapı	Göz Kalınlığı	Ağız Açıklığı	İç Uzunluk	İç Çap	Dış Boy	Pim Uzunluğu	Genişlik	Somun Kalınlığı	Birim Ağırlık
WLL	Diameter Bow a	Diameter Pin b	Diameter Eye c	Width Eye d	Width Inside e	Length Inside f	Width Bow g	Length h	Length Bolt i	Width j	Thickness Nut k	Weight Each
t	inch	inch	inch	inch	inch	inch	inch	inch	inch	inch	inch	lbs
120	3 3/4	3 3/4	8 3/16	3 49/32	5 25/32	15 3/4	9 3/8	25 15/32	17 5/16	16 27/32	1 31/32	243
150	4 1/8	4 1/4	9 3/8	4 1/32	6 21/32	16 5/32	10 13/16	27 3/32	19 9/32	19 3/32	2 3/8	353
200	4 23/32	5 1/8	10 31/32	4 7/16	7 1/16	20 3/16	11 13/32	33	20 15/32	20 7/8	2 3/8	518
250	5 1/8	5 1/2	11 25/32	4 21/32	8 1/16	21 13/16	12	35 19/32	22 1/16	22 1/4	2 9/16	628
300	5 1/2	5 29/32	12 25/32	4 27/32	8 1/16	24 11/32	12	39 7/32	22 5/8	23 1/32	2 3/4	750
400	6 11/16	6 7/8	14 13/16	6 15/32	9 3/32	26 5/16	12 25/32	43 27/32	27 5/32	26 3/16	2 3/4	1235
500	7 3/32	7 9/32	15 21/32	6 15/32	10 3/32	28 9/32	13 25/32	46 27/32	28 11/32	27 15/16	2 3/4	1510
600	7 7/8	8 1/16	17 15/32	7 7/16	11 3/32	28 9/32	14 3/4	48 15/16	31 7/8	30 1/2	2 3/4	1940
700	8 9/32	8 15/32	17 7/8	8 1/32	12 1/8	28 9/32	15 3/4	49 23/32	34 1/4	32 9/32	2 3/4	2161
800	8 9/32	8 21/32	18 9/32	8 1/32	12 1/8	28 9/32	15 3/4	50	34 1/4	32 9/32	2 3/4	2425
900	8 21/32	9 1/16	19 3/32	8 15/32	12 29/32	28 9/32	16 17/32	51 1/32	36 7/32	33 27/32	2 3/4	2822
1000	9 7/16	9 7/16	20 9/32	8 15/32	13 3/4	28 9/32	16 17/32	52 19/32	37	35 7/16	2 3/4	3219
1250	10 1/4	10 5/8	23 1/32	9 1/16	14 17/32	30 1/4	17 23/32	57 5/16	40 11/32	38 3/16	2 3/4	4387
1500	11 1/32	11 13/32	24 19/32	9 1/16	14 17/32	32 7/32	17 23/32	61 1/4	40 11/32	39 3/4	2 3/4	5291

* Taşıma kapasitesi 150 tondan büyük olan mapalar için / For shackles ≥ WLL 150 t

RFID CAD