

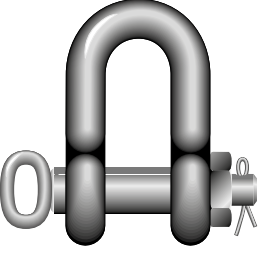
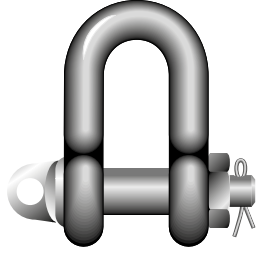
Green Pin U Tipi Mapa Kilit DIN 82101 Tip C

Green Pin Dee Shackles with Screw Collar Pin DIN 82101 Type C

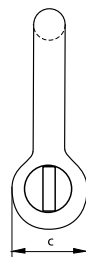
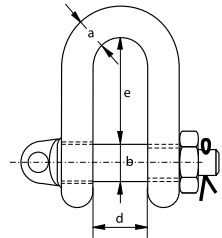
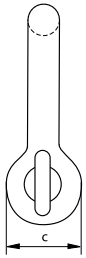
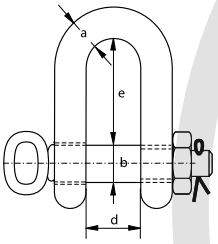
- **Malzeme / Material**
- **Emniyet Katsayısı / Safety Factor**
- **Malzeme Yüzeyi / Finish**
- **Sertifika / Certification**

Gövde ve pim yüksek mukavemetli, kalite sınıfı 4 / Bow and pin high tensile steel, grade 4
Emniyet katsayısı 5:1 dir / MBL equals 5 x WLL

Sıcak daldırma galvaniz veya boyanmamış / Hot dipped galvanized or self colored
2.1 2.2 CE



S-3356



Taşıma Kapasitesi	Gövde Çapı	Pim Çapı	Göz Çapı	Ağız Açıklığı	İç Uzunluk	Birim Ağırlık
WLL	Diameter Bow	Diameter Pin	Diameter Eye	Width Inside	Length Inside	Weight Each
t	a	b	c	d	e	Ad/kg
0,4	10	10	20	14	30	0,11
0,6	12	12	24	17	36	0,2
1	13	16	32	21	49	0,37
1,6	16	20	40	27	61	0,69
2	20	22	44	30	67	1,13
2,5	22	24	48	33	73	1,5
3	25	27	54	38	83,5	2,15
4	28	30	60	42	91	2,93
5	32	36	72	47	111	4,7
6	36	39	78	53	119,5	6,33
8	41	45	90	60	139,5	8,6
10	44	48	96	66	147	10,8
12	49	52	104	73	158	14,4
16	55	60	120	81	185	20,5
20	61	68	136	90	211	27,9
25	67	72	144	100	221	36
32	74	80	160	110	246	49
40	75	90	180	125	276	70
50	88	100	200	140	307	100
63	96	110	220	155	339	140
80	110	125	250	175	385,5	200
100	125	140	280	200	430	280

- **Taşıma kapasitesi 25 tona kadar olanlar pimli vidalı / With screw collar pin: up to size no. 25**
- **Taşıma kapasitesi 32 tondan daha büyük olanlar elle çevrilebilir / With hand grip: from size no. 32**