

## MAKARALAR / BLOCKS

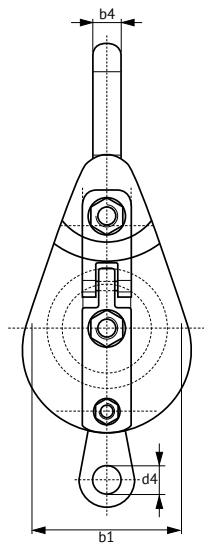
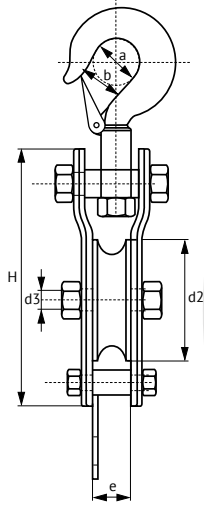
### Sac Tipi Rulmanlı Makara

Standard Block

- **Malzeme / Material**
- **Emniyet Katsayısı / Safety Factor**
- **Malzeme Yüzeyi / Finish**
- **Sertifika / Certification**

**Yüksek alaşımlı çelik / High alloy steel**  
**Emniyet katsayısı 4:1'dir / MBL equals 4 x WLL**  
**Fırın boyalı / Painted**

**2.1 2.2 CE**



Ölçü Size	Çalışma Yükü Working Load Limit	Ölçüler Dimensions								
		a	b	b1	b4	d2	d3	d4	e	H
D2	WLL t	mm	mm	mm	mm	mm	mm	mm	mm	mm
100x1	1	39	27,5	120	20	100	20	18	30	220
100x2	1	39	27,5	120	20	100	20	18	65	245
100x3	1	39	27,5	120	20	100	20	18	98	245
125x1	2	42	31	145	20	120	24	24	30	250
125x2	2	42	31	145	20	120	24	24	65	275
125x3	2	42	31	145	20	120	24	24	98	275
150x1	3	51	39	168	24	140	30	25	31	275
150x2	3	51	39	168	24	140	30	25	67	295
150x3	3	51	39	168	24	140	30	25	100	295
200x1	5	76	60	230	28	190	36	25	38	330
200x2	5	76	60	230	28	190	36	25	80	375
200x3	5	76	60	230	28	190	36	25	120	375
300x1	8	83	67	330	32	300	42	35	47	460
300x2	8	83	67	330	32	300	42	35	100	500
300x3	8	83	67	330	32	300	42	35	152	500
350x1	12	105	90	380	42	350	48	40	54	550
350x2	12	105	90	380	42	350	48	40	116	590
350x3	12	105	90	380	42	350	48	40	178	590
410x1	15	130	110	430	42	410	56	45	69	750
410x2	15	130	110	430	42	410	56	45	136	790
410x3	15	130	110	430	42	410	56	45	208	790