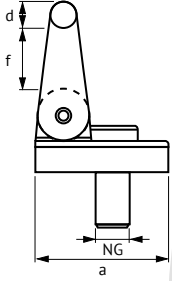
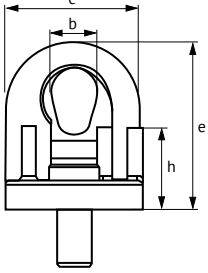


## TWN 0121/1 Döner Tip Vidalı Kaldırma Aparatı Grade 80

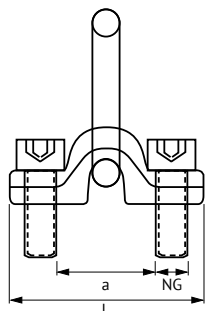
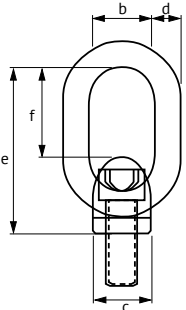
TWN 0121/1 Rotating Lifting Point Grade 80



Diş Çapı Screw Size	Çalışma Yüğü WLL (t max)	Diş Boyu Thread Length mm (G)	Ölçüler (mm) Dimensions								Ağırlık (kg) Weight
			e	f	a	c	h	b	d	NG	
M16	1,12	25	65	30	61	65	38	22	12	6-8	0,70
M20	2,00	30	85	40	79	82	49	28	15	8-8	1,50
M24	3,15	36	98	45	92	101	59	33	19	10-8	2,60
M30	5,30	50	120	53	113	125	72	45	25	13-8	4,60

## TWN 0122 Vidalı Kaldırma Aparatı Grade 80

TWN 0122 Lifting Point Grade 80



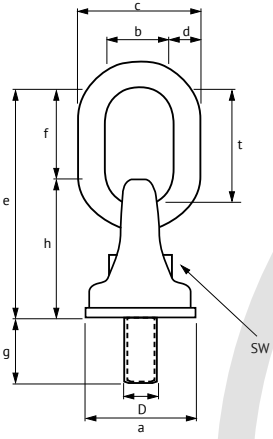
Diş Çapı Screw Size	Çalışma Yüğü WLL (t max)	Diş Boyu Thread Length mm (G)	Ölçüler (mm) Dimensions								Ağırlık (kg) Weight
			e	f	a	c	l	d	b	NG	
M16	3,15	25	112	57	90	38	130	18	40	10-8	1,47
M20	5,30	36	149	80	115	45	165	22	50	13-8	2,80
M30	8,00	50	183	93	150	55	212	26	65	16-8	5,90
M36	15,00	53	226	105	175	72	255	36	80	22-8	11,40
M42	21,20	67	272	132	200	90	295	45	100	26-8	19,30
M45	25,00	67	272	132	200	90	295	45	100	28-8	20,00
M56	31,50	88	336	193	230	100	330	48	110	32-8	32,00
M56	36,00	88	336	193	230	100	330	48	110	34-8	32,00

Yeni  
New**TWN 0123 Kaldırma Aparatı Grade 80**

TWN 0123 Lifting Point Grade 80



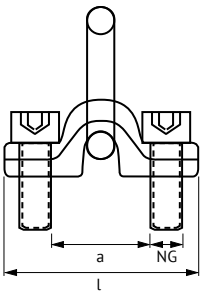
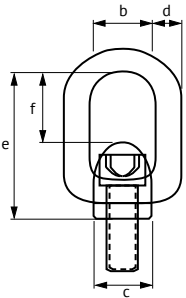
Diş Çapı Screw Size	Çalışma Yüğü WLL (t max)	Diş Boyu Thread Length mm (G)	Ölçüler (mm) Dimensions								Ağırlık (kg) Weight
			e	f	d	t	b	SW	a	NG	
M16	1,12	30	113	52	16	70	35	46	60	6-8	0,73
M16	1,12	30	153	92	16	110	60	46	60	6-8	1,00
M20	2,00	38	113	52	16	70	35	46	60	8-8	0,95
M20	2,00	38	153	92	16	110	60	46	60	8-8	1,12
M24	3,15	35	128	67	18	85	40	46	60	10-8	1,04
M24	3,15	45	153	92	18	110	60	46	60	10-8	1,39

**TWN 0127 MDB Vidalı Kaldırma Aparatı Grade 80**

TWN 0127 MDB Lifting Point Grade 80



Diş Çapı Screw Size	Çalışma Yüğü WLL (t max)	Diş Boyu Thread Length mm (G)	Ölçüler (mm) Dimensions								Ağırlık (kg) Weight
			e	f	a	c	l	d	b	NG	
M20	3,15	39	68	48	90	44	130	18	48	10-8	1,10
M24	5,30	36	113	69	110	60	160	24	66	13-8	2,70

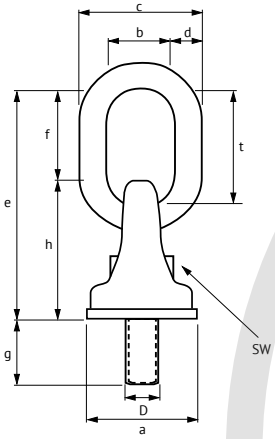


## TWN 1120 Titan Döner Yataklı Kaldırma Mapası Grade 100

TWN 1120 Titan Lifting Point Grade 100



Diş Çapı Screw Size (D)	Çalışma Yüğü WLL (t max)	Diş Boyu Thread Length mm (G)	Ölçüler (mm) Dimensions									Ağırlık (kg) Weight
			e	f	d	t	b	a	c	h	SW	
M8	0,30	19	95	40	10	50	28	43	50	55	13	0,40
M10	0,45	19	95	40	10	50	28	43	50	55	16	0,41
M12	0,60	24	95	40	10	50	28	43	50	55	18	0,43
M16	1,40	29	95	40	10	50	28	43	50	55	24	0,47
M20	2,50	33	115	49	12	60	34	54	60	66	30	0,79
M24	3,50	40	135	55	16	70	40	65	74	80	36	1,50
M30	6,70	52	167	66	18	85	50	85	93	101	46	3,00
M36	8,00	66	212	92	22	115	50	96	107	120	55	4,80

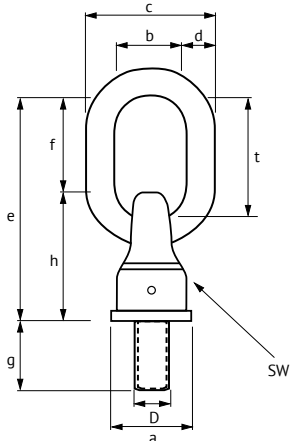


## TWN 1830 X-Treme Döner Yataklı Kaldırma Mapası Grade 100

TWN 1830 X-Treme Lifting Point Grade 100



Diş Çapı Screw Size (D)	Çalışma Yüğü WLL (t max)			Diş Boyu Thread Length mm (G)	Ölçüler (mm) Dimensions								Ağırlık (kg) Weight
	Y	Z	X		e	f	d	t	b	a	SW	h	
M10	0,9	0,45	0,6	15	101	46,5	13	55	33	39	36	54,5	0,48
M12	1,2	0,6	0,7	18	101	46,5	13	55	33	39	36	54,5	0,49
M16	2,8	1,4	1,7	20	101	46,5	13	55	33	39	36	54,5	0,50
M20	5,3	2,5	2,8	25	121	58,5	16	70	34	50	46	62,5	0,90
M20	5,3	2,5	2,8	50	121	58,5	16	70	34	50	46	62,5	1,00
M24	7	3,5	4	30	148	72	18	85	40	57	50	76	1,50
M24	7	3,5	4	90	148	72	18	85	40	57	50	76	1,70
M30	10	5,3	6,3	40	170,5	83	22	100	50	73	65	87,5	2,70
M36	15	8	9,5	50	179	81	22	100	50	83	70	98	3,60
M36	15	8	9,5	63	179	81	22	100	50	83	70	98	3,80
M36	15	8	9,5	70	179	81	22	100	50	83	70	98	3,90
M42	18	10	12,5	60	244	116	32	140	70	106	95	128	8,30
M45	18	12,5	16,5	65	244	116	32	140	70	106	95	128	8,40
M48	20	12,5	16	68	244	116	32	140	70	106	95	128	8,60
M56	28	17	22	78	251	116	32	140	70	116	95	135	10,00
M64	28	17	22	96	251	116	32	140	70	116	95	135	11,00



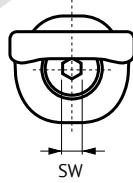
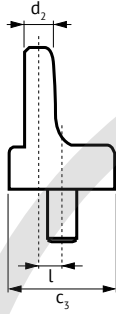
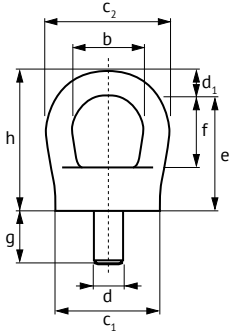
Yeni  
New

**Yeni** **TWN 1884 Kaldırma Mapası Grade 100**

TWN 1884 Lifting Point Grade 100



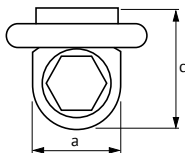
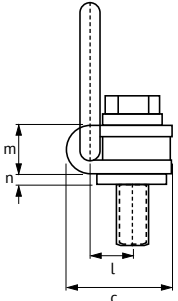
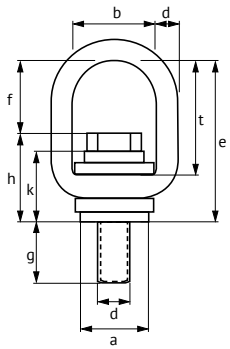
Diş Çapı Screw Size (D)	Çalışma Yüğü WLL (t max)	Diş Boyu Thread Length mm (G)	Ölçüler (mm) Dimensions											Ağırlık (kg) Weight
			e	f	b	d <sub>1</sub>	d <sub>2</sub>	h	l	c <sub>1</sub>	c <sub>2</sub>	c <sub>3</sub>	SW	
M16	1,70	27	61,5	38	38	14	15	75,5	12,5	56	66	56	10	0,66
M20	2,50	33	70	42	42	16	17	86	15	64	74	61	12	0,99

**TWN 1890 XS Merkezden Kaçık Döner Yataklı Aybolt Grade 100**

TWN 1890 XS Lifting Point Grade 100



Diş Çapı Screw Size	Çalışma Yüğü WLL (t max)	Diş Boyu Thread Length mm (G)	Ölçüler (mm) Dimensions										Ağırlık (kg) Weight
			e	f	d	t	b	a	c	h	k	l	
M10	0,63	17	71	37	8,5	53	35	32	43	35	28	17	0,29
M12	1,00	22	71	36	8,5	53	35	32	43	36	28	17	0,31
M16	1,70	28	98	46	13	70	50	48	64	52	42	25	0,95
M20	2,50	38	98	44	13	70	50	48	64	55	42	25	1,10
M24	4,00	40	134	70	16	102	58	50	71	64	49	28	1,70
M30	6,00	44	149	73	20	110	70	65	88	75	57	35	3,10
M36	8,00	64	149	70	20	140	70	67	88	79	57	35	3,50
M42	10,00	74	191	98	24	145	84	81	106	93	67	43	6,10



- XS kaldırma aparatı özellikle içindeki vida değiştirilebilecek şekilde tasarlanmıştır. Dolayısıyla farklı diş uzunlukları civata değiştirilerek elde edilebilir.
- The XS-Lifting point is especially designed for the exchange of the screws and therefore screw lengths.

**Tablo 35 / Table 35**




**Vidalı Tip Kaldırma Aparatlarının Çalışma Yük Tablosu**

Working Load Limit Table for Lifting Points, Screwed Type

Yeni  
New

			TWN 0121/1 Döner Tip Vidalı Kaldırma Aparatı Lifting Point Swivel Type				TWN 0122 Vidalı Kaldırma Aparatı Lifting Point								TWN 0123 Kaldırma Aparatı Lifting Point			TWN 0127 MDB Vidalı Kaldırma Aparatı Lifting Point MDB		
Kullanım Şekli Use Case	Kullanım Açısı Inclination Angle $\beta$	Bacak Sayısı No. of Legs	Çalışma Yükü / Table WLL in [t]																	
			İşaretleme Marking				Diş Çapı Screw Size													
			1,12	2	3,15	5,3	3,15	5,3	8	15	21,2	25	31,5	36	1,12	2	3,15	3,15	5,3	
																				
																				
																				
	0°	1	1,12	2	3,15	5,3	3,15	5,3	8	15	21,2	25	31,5	36	1,12	2	3,15	3,15	5,3	
	0°	2	2,24	4	6,3	10,6	6,3	10,6	16	30	42,4	50	63	72	2,24	4	6,3	6,3	10,6	
	90°	1	1,12	2	3,15	5,3	3,15	5,3	8	15	21,2	25	31,5	36	1,12	2	3,15	3,15	5,3	
	90°	2	2,24	4	6,3	10,6	6,3	10,6	16	30	42,4	50	63	72	2,24	4	6,3	6,3	10,6	
	0-45°	2	1,6	2,8	4,25	7,5	4,25	7,5	11,2	21,2	30	33,5	45	50	1,6	2,8	4,25	4,25	7,5	
	45-60°	2	1,12	2	3,15	5,3	3,15	5,3	8	15	21,2	25	31,5	36	1,12	2	3,15	3,15	5,3	
	Asimetrik Unbalanced	2	1,12	2	3,15	5,3	3,15	5,3	8	15	21,2	25	31,5	36	1,12	2	3,15	3,15	5,3	
	0-45°	3+4	2,36	4,25	6,7	11,2	6,7	11,2	17	31,5	45	50	67	75	2,36	4,25	6,7	6,7	11,2	
	45-60°	3+4	1,7	3	4,75	8	4,75	8	11,8	22,4	31,5	37,5	47,5	53	1,7	3	4,75	4,75	8	
	Asimetrik Unbalanced	3+4	1,12	2	3,15	5,3	3,15	5,3	8	15	21,5	25	31,5	36	1,12	2	3,15	3,15	5,3	

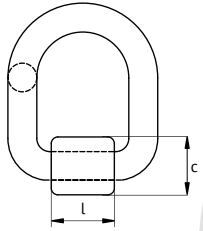
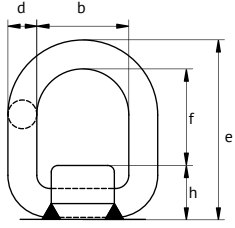
Yeni  
New

TWN 1120 Titan Döner Yataklı Kaldırma Mapası Titan Lifting Point								TWN 1830 X-Treme Döner Yataklı Kaldırma Mapası X-Treme Lifting Point								TWN 1884 Kaldırma Mapası Lifting Point		TWN 1890 XS Merkezden Kaçık Döner Yataklı Aybolt XS Lifting Point											
																													
Çalışma Yüğü / Table WLL in [t]																													
M8	M10	M12	M16	M20	M24	M30	M36	M10	M12	M16	M20	M24	M30	M36	M42	M45	M48	M56	M16	M20	M10*	M12*	M16	M20	M24	M30	M36	M42	M48*
0,3	0,45	0,6	1,4	2,5	3,5	6,7	8	0,45	0,6	1,4	2,5	3,5	5,3	8	10	12,5	12,5	17	1,7	2,5	0,63	1	1,5	2,5	4	6	8	10	12
0,3	0,45	0,6	2,1	3	6	7,1	12,5	0,9	1,2	2,8	5,3	7	10	15	18	20	20	28	1,7	2,5	0,63	1	1,5	2,5	4	6	8	10	12
0,6	0,9	1,2	4,2	6	12	14,2	25	1,8	2,4	5,6	10,6	14	20	32	36	40	40	56	3,4	5	1,26	2	3	5	8	12	16	20	24
0,3	0,45	0,6	1,4	2,5	3,5	6,7	8	0,6	0,7	1,7	2,8	4	6,3	9,5	12,5	15	16	22	1,7	2,5	0,63	1	1,5	2,5	4	6	8	10	12
0,6	0,9	1,2	2,8	5	7	13,4	16	1,2	1,4	3,4	5,6	8	12,6	19	25	30	32	44	3,4	5	1,26	2	3	5	8	12	16	20	24
0,42	0,63	0,85	2	3,55	5	9	11,2	0,63	0,86	2	3,56	5	7,5	11,2	14	17,5	17,5	23,6	2,4	3,55	0,9	1,4	2,1	3,5	5,7	8,4	11,2	14	16,8
0,3	0,45	0,6	1,4	2,5	3,55	6,7	8	0,45	0,6	1,4	2,5	3,55	5,3	8	10	12,5	12,5	17	1,7	2,5	0,63	1	1,5	2,5	4	6	8	10	12
0,3	0,45	0,6	1,4	2,5	3,55	6,7	8	0,45	0,6	1,4	2,5	3,55	5,3	8	10	12,5	12,5	17	1,7	2,5	0,63	1	1,5	2,5	4	6	8	10	12
0,63	0,95	1,25	3	5,3	7,1	14	17	0,95	1,26	3	5,3	7,1	11,2	17	21,2	26,5	26,5	35,5	3,57	5,25	1,3	2,1	3,15	5,3	8,5	12,7	16,9	21,2	25,4
0,45	0,67	0,9	2,1	3,8	5,3	10	11,8	0,67	0,9	2,1	3,8	5,3	8	11,8	15	18,8	18,8	25	2,55	3,75	1	1,5	2,25	3,8	6	9,12	12,1	15,2	18,2
0,3	0,45	0,6	1,4	2,5	3,55	6,7	8	0,45	0,6	1,4	2,5	3,55	5,3	8	10	12,5	12,5	17	1,7	2,5	0,63	1	1,5	2,5	4	6	8	10	12

\* Henüz geliştirme aşamasında  
\* In development

## TWN 0119 Kaynaklanabilir Halka Grade 80

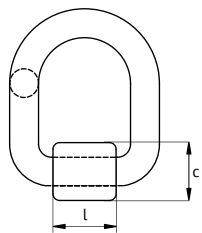
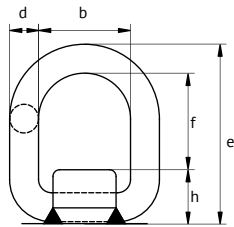
TWN 0119 Welded Lifting Point Grade 80



Ticari Ölçü Trade Size	Çalışma Yüğü WLL (t max)	Gerdirme Kapasitesi Lashing Capacity (daN)	Ölçüler (mm) Dimensions							Ağırlık (kg) Weight
			e	f	c	l	h	d	b	
6-8	1,12	2200	59	31	32	32	28	12	36	0,24
8-8	2,00	4000	69	37	38	38	33	14	42	0,46
10-8	3,15	6300	84	46	45	44	38	18	48	0,63
13-8	5,30	10000	120	69	60	60	51	24	66	1,90
16-8	8,00	16000	127	66	68	65	61	28	72	2,67
22-8	15,00		178	98	96	109	80	39	120	8,09
32-8	31,50		292	174	145	165	118	56	180	27,30
40-8	50,00		371	228	186	210	145	72	230	60,00

## TWN 0124 Kaynaklanabilir Halka Yaylı Grade 80

TWN 0124 Welded Lifting Point with Spring Grade 80



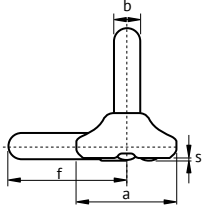
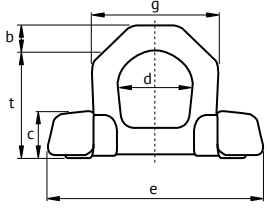
Ticari Ölçü Trade Size	Çalışma Yüğü WLL (t max)	Gerdirme Kapasitesi Lashing Capacity (daN)	Ölçüler (mm) Dimensions							Ağırlık (kg) Weight
			e	f	c	l	h	d	b	
6-8	1,12	2200	56	30	32	32	28	12	36	0,25
8-8	2,00	4000	67	37	38	38	33	14	42	0,43
10-8	3,15	6300	81	45	45	44	38	18	48	0,72
13-8	5,30	10000	117	69	60	60	54	24	66	1,90
16-8	8,00	16000	122	67	68	65	61	28	72	2,80

Yeni  
New**TWN 1872 Grade 100**

TWN 1872 Lifting Point Grade 100



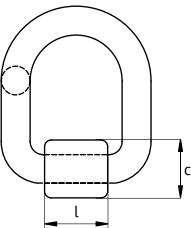
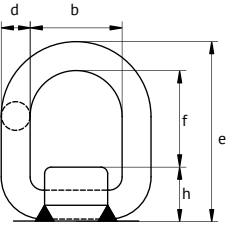
Ticari Ölçü Trade Size	Çalışma Yüğü WLL (t max)	Ölçüler (mm) Dimensions									Ağırlık (kg) Weight
		a	c	d	e	f	g	l	t	s	
10-10	4,0	65	28	48	134	74	74	105	70	2	0,79
13-10	6,7	80	37	60	170	93	100	135	85	2	1,70

Yeni  
New**TWN 1882 Kaynaklanabilir Halka Yaylı Grade 100**

TWN 1882 Welded Lashing Point with Spring Grade 100



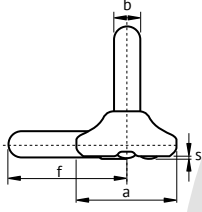
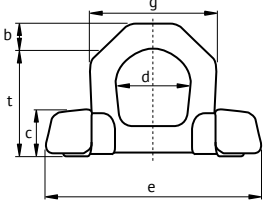
Ticari Ölçü Trade Size	Ölçü Nominal Size	Çalışma Yüğü WLL (t max)	Ölçüler (mm) Dimensions						Ağırlık (kg) Weight
			d	b	a	e	h	c	
6-XL	6	1,5	14	38	65	42	25	49	0,42
8-XL	8	2,5	15	45	76	45	27	50	0,57
10-XL	10	4,0	17	50	85	57	31	55	1,66
13-XL	13	6,7	23	68	116	79	44	77	2,20
16-XL	16	10,0	27	69	130	72	54	92	3,35

Kaldırma Aparatları  
Lifting Points

**Yeni New** **TWN 1473 Kaldırma Halkası Grade 100**  
TWN 1473 Lifting Point Grade 100



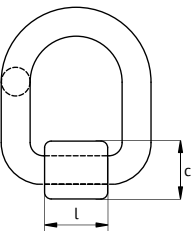
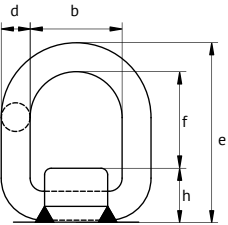
Ticari Ölçü Trade Size	Çalışma Yüğü WLL (t max)	Ölçüler (mm) Dimensions									Ağırlık (kg) Weight
		a	c	d	e	f	g	l	t	s	
10-10	4,0	65	28	48	134	74	74	105	70	2	0,79
13-10	6,7	80	37	60	170	93	100	135	85	2	1,70



**Yeni New** **TWN 1880 Kaynaklanabilir Halka Yaylı Grade 100**  
TWN 1880 Welded Lashing Point with Spring Grade 100



Ticari Ölçü Trade Size	Ölçü Nominal Size	Gerdirme Kapasitesi Lashing Capacity (daN)	Ölçüler (mm) Dimensions						Ağırlık (kg) Weight
			d	b	a	e	h	c	
6-XL	6	3000	14	38	65	42	25	49	0,42
8-XL	8	5000	15	45	76	45	27	50	0,57
10-XL	10	8000	17	50	85	57	31	55	1,66
13-XL	13	13500	23	68	116	79	44	77	2,20
16-XL	16	20000	27	69	130	72	54	92	3,35

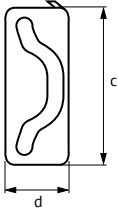
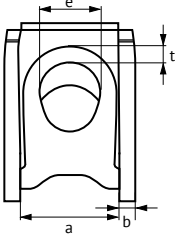


## TWN 1471 ZK Model Gerdirme Aparatı Grade 80

TWN 1471 Welded Lashing Point ZK Model Grade 80

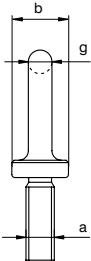
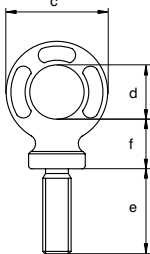


Ticari Ölçü Trade Size	Uygulama Execution	Gerdirme Kapasitesi Lashing Capacity (daN)	Ölçüler (mm) Dimensions						Ağırlık (kg) Weight
			a	b	c	d	e	t	
5	N	5000	107	12	144	72	50	14	2,60
<b>Yeni</b> New	S	5000	107	12	144	72	50	14	2,60
10	N	10000	137	15	144	72	60	18	3,60
<b>Yeni</b> New	S	10000	137	15	144	72	60	18	3,60



## AL Erkek Aybolt Grade 80

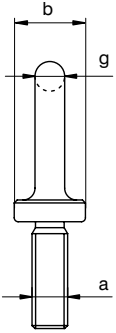
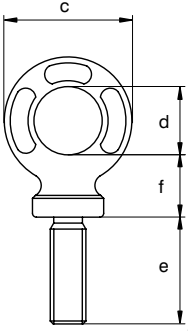
AL Eye Bolt Grade 80



Çalışma Yüğü WLL	Ölçüler (mm) Dimensions							Ağırlık (kg) Weight
	t	a	b	c	d	e	f	
0,2	M6 x 1,00	20	34	20	20	17	7	0,05
0,4	M8 x 1,25	20	34	20	24	17	7	0,07
0,7	M10 x 1,50	20	38	22	30	19	8	0,08
1	M12 x 1,75	25	47	27	36	23	10	0,14
1,2	M14 x 2,00	30	57	30	40	27	14	0,25
1,5	M16 x 2,00	36	65	35	53	31	14	0,39
2	M18 x 2,50	36	65	35	53	31	14	0,38
2,5	M20 x 2,50	40	73	40	58	34	16	0,58
3	M22 x 2,50	42	82	45	64	38	19	1,01
4	M24 x 3,00	55	95	55	84	40	20	1,12
5	M27 x 3,00	55	95	55	84	40	20	1,18
6	M30 x 3,50	60	108	60	99	49	24	1,84
7	M33 x 3,50	60	108	60	99	49	24	2,01
8	M36 x 4,00	65	118	68	117	47	25	2,44
9	M39 x 4,00	65	118	68	117	47	25	2,62
10	M42 x 4,50	70	142	80	135	61	31	5,41
15	M45 x 4,50	70	142	80	135	61	31	4,16
18	M48 x 5,00	95	181	97	150	68	42	8,22
20	M52 x 5,00	95	181	97	150	68	42	8,55
25	M56 x 5,50	95	181	97	150	68	42	8,85
30	M60 x 5,50	95	181	97	150	68	42	9,16
36	M64 x 6,00	95	181	97	150	68	42	9,55

## ALDIN Erkek Aybolt DIN 580\* Grade 80

ALDIN Eye Bolt DIN 580\* Grade 80

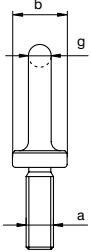
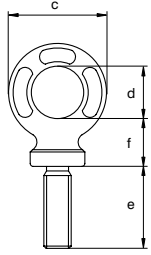


Çalışma Yüğü WLL	Ölçüler (mm) Dimensions							Ağırlık (kg) Weight
	t	a	b	c	d	e	f	
0,2	M6 x 1,00	20	34	20	13	17	7	0,05
0,4	M8 x 1,25	20	34	20	13	17	7	0,05
0,7	M10 x 1,50	20	38	22	17	19	8	0,07
1	M12 x 1,75	25	47	27	21	23	10	0,13
1,2	M14 x 2,00	30	57	30	27	27	14	0,24
1,5	M16 x 2,00	36	63	35	27	31	14	0,34
2	M18 x 2,50	36	63	35	30	31	14	0,38
2,5	M20 x 2,50	40	72	40	30	34	16	0,52
3	M22 x 2,50	42	82	45	36	38	19	0,67
4	M24 x 3,00	55	95	55	36	40	20	0,99
5	M27 x 3,00	55	95	55	45	40	20	1,08
6	M30 x 3,50	60	108	60	45	49	24	1,66
7	M33 x 3,50	60	108	60	54	49	24	1,74
8	M36 x 4,00	65	118	68	54	47	25	2,01
9	M39 x 4,00	65	118	68	63	47	25	2,08
10	M42 x 4,50	70	142	80	63	61	31	3,37
15	M45 x 4,50	70	142	80	68	61	31	3,47
18	M48 x 5,00	95	181	97	68	68	42	7,17
20	M52 x 5,00	95	181	97	78	68	42	7,25
25	M56 x 5,50	95	181	97	78	68	42	7,52
30	M60 x 5,50	95	181	97	90	68	42	7,78
36	M64 x 6,00	95	181	97	90	68	42	8,12

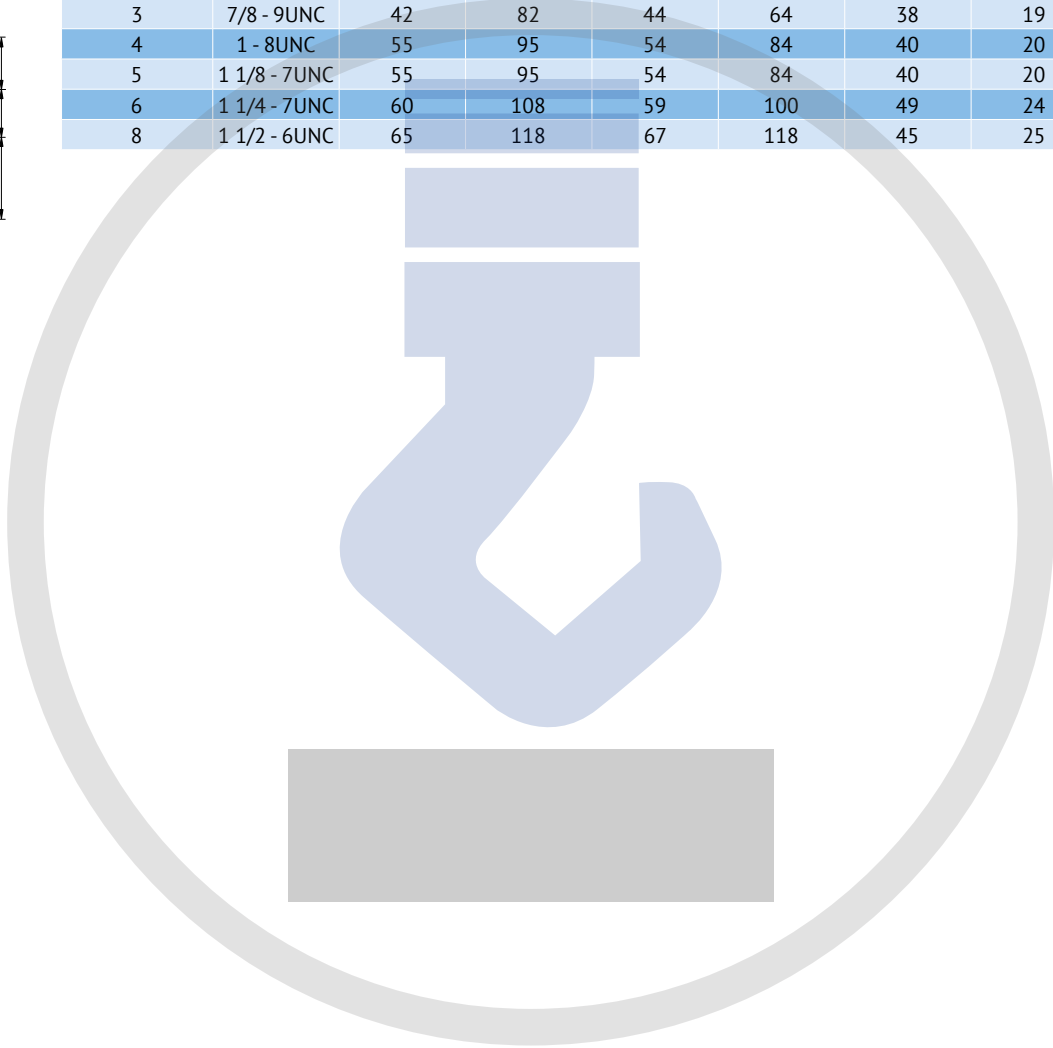
- Diş uzunluğu DIN 580'e göredir.  
- Tread lengths are acc. to DIN 580.

## ALUNC Erkek Aybolt Grade 80

ALUNC Eye Bolt Grade 80

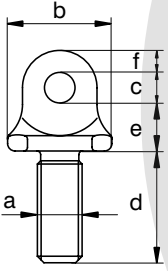
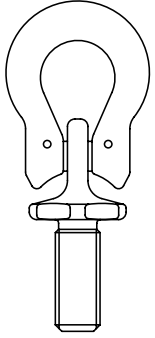


Çalışma Yüğü WLL	Ölçüler (mm) Dimensions							Ağırlık (kg) Weight
	t	a	b	c	d	e	f	
0,2	1/4 - 20UNC	20	34	20	20	17	7	0,05
0,5	5/16 - 16UNC	20	34	20	24	17	7	0,06
0,7	3/8 - 16UNC	20	38	22	30	19	8	0,08
1	1/2 - 13UNC	25	47	26	36	23	10	0,14
1,5	5/8 - 11UNC	36	65	35	55	30	14	0,38
2,5	3/4 - 10UNC	40	73	39	59	34	16	0,55
3	7/8 - 9UNC	42	82	44	64	38	19	0,81
4	1 - 8UNC	55	95	54	84	40	20	1,14
5	1 1/8 - 7UNC	55	95	54	84	40	20	1,21
6	1 1/4 - 7UNC	60	108	59	100	49	24	1,91
8	1 1/2 - 6UNC	65	118	67	118	45	25	2,52



## OL Küçük Gözlü Aybolt Grade 80

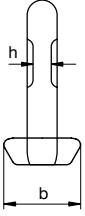
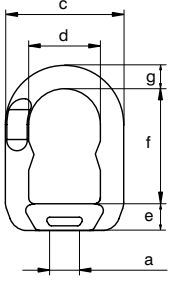
OL Small Lifting Eye Grade 80



Çalışma Yüğü WLL	Ölçüler (mm) Dimensions						Ağırlık (kg) Weight
	t	a	b	c	d	e	
0,5	M8 x 1,25	28	8	30	13	6	0,05
0,9	M10 x 1,50	28	8	30	13	6	0,05
1,25	M12 x 1,75	28	8	30	13	6	0,06
1,5	M14 x 2,00	32	9	46	16	10	0,12
1,9	M16 x 2,00	32	9	46	16	10	0,14
2,25	M18 x 2,50	32	9	46	16	10	0,15
3,12	M20 x 2,50	41	13	56	19	11	0,25
3,8	M22 x 2,50	41	13	56	19	11	0,28
5	M24 x 3,00	54	16	68	28	12	0,53
6,25	M27 x 3,00	54	16	68	28	12	0,58
8	M30 x 3,50	60	20	92	33	13	0,94
9	M33 x 3,50	60	20	92	33	13	1,03
10	M36 x 4,00	60	20	92	33	13	1,12
12,5	M39 x 4,00	75	24	105	39	19	1,90
15	M42 x 4,50	75	24	105	39	19	2,02

## EL Diři Aybolt Grade 80

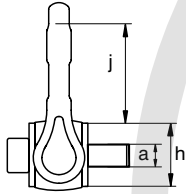
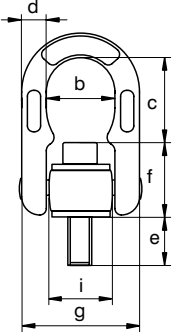
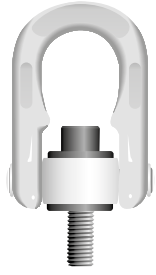
EL Eye Nut Grade 80



Çalıřma Yüğü WLL	Ölçüler (mm) Dimensions								Ağırlık (kg) Weight
	t	a	b	c	d	e	f	g	
0,2	M6 x 1,00	31	51	30	14	44	11	6	0,15
0,4	M8 x 1,25	31	51	30	14	44	11	6	0,15
0,7	M10 x 1,50	31	51	30	14	44	11	6	0,15
1	M12 x 1,75	39	56	32	15	48	12	6	0,29
1,2	M14 x 2,00	39	56	32	15	48	12	6	0,29
1,5	M16 x 2,00	44	65	37	16	60	14	8	0,38
2	M18 x 2,50	44	65	37	16	60	14	8	0,38
2,5	M20 x 2,50	44	65	37	16	60	14	8	0,38
3	M22 x 2,50	52	79	48	21	75	16	11	0,63
4	M24 x 3,00	52	79	48	21	75	16	11	0,63
5	M27 x 3,00	52	79	48	21	75	16	11	0,63
6	M30 x 3,50	66	96	58	25	88	21	14	1,11
7	M33 x 3,50	66	96	58	25	88	21	14	1,11
8	M36 x 4,00	84	121	73	39	100	25	17	2,22
9	M39 x 4,00	84	121	73	39	100	25	17	2,22
10	M42 x 4,50	84	121	73	39	100	25	17	2,22
15	M45 x 4,50	90	132	82	42	121	25	22	2,73
18	M48 x 5,00	90	132	82	42	121	25	22	2,73

## ADA Döner Yataklı Kaldırma Mapası Grade 80

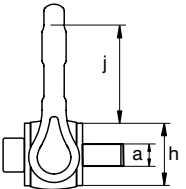
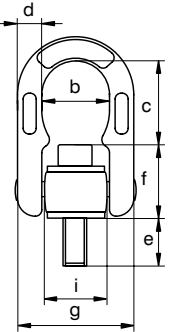
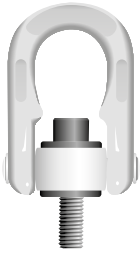
ADA Rotating Hoist Ring Grade 80



Çalışma Yüğü WLL	Ölçüler (mm) Dimensions										Anahtar Ölçüsü Hex Key (mm)	Tork Değeri Torque Value (Nm)	Ağırlık (kg) Weight
	t	a	b	c	d	e	f	g	h	i			
0,4	M8 x 1,25	35	41	13	18	35	68	34	38	43	6	6,5	0,43
0,7	M10 x 1,50	35	39	13	18	37	68	34	38	43	8	13	0,44
1	M12 x 1,75	35	36	13	22	39	68	34	38	43	10	22	0,46
1,3	M14 x 2,00	35	35	13	22	42	68	34	38	43	12	35	0,47
1,6	M16 x 2,00	35	42	13	28	43	68	34	38	52	14	55	0,52
2	M18 x 2,50	35	40	13	28	45	68	34	38	52	14	80	0,54
2,5	M20 x 2,50	35	38	13	32	47	68	34	38	52	17	110	0,59
3	M22 x 2,50	53	57	20	33	69	105	49	56	71	17	150	1,88
4	M24 x 3,00	53	55	20	39	71	105	49	56	71	19	190	1,93
5	M27 x 3,00	53	61	20	45	65	105	49	56	71	19	280	1,96
6,3	M30 x 3,50	53	61	20	45	65	105	49	56	71	19	380	2,03
7	M33 x 3,50	71	87	30	54	83	146	68	77	98	19	520	5,28
10	M36 x 4,00	71	87	30	54	84	146	68	77	98	19	600	5,35
10	M39 x 4,00	71	87	30	63	84	146	68	77	98	19	870	5,45
12,5	M42 x 4,50	71	87	30	63	84	146	68	77	98	19	1000	5,56

## ADAUNC Döner Yataklı Kaldırma Mapası Grade 80

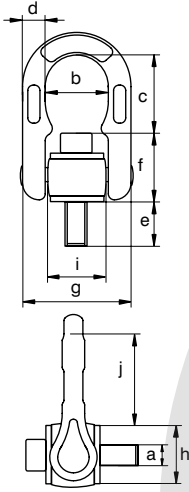
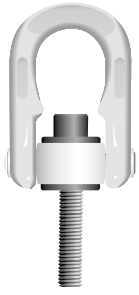
ADAUNC Rotating Hoist Ring Grade 80



Çalışma Yüğü WLL	Ölçüler (mm) Dimensions										Anahtar Ölçüsü Hex Key (mm)	Tork Değeri Torque Value (Nm)	Ağırlık (kg) Weight
	t	a	b	c	d	e	f	g	h	i			
0,4	5/16 - 18UNC	35	41	13	18	35	68	34	38	43	6	6,5	0,43
0,6	3/8 - 16UNC	35	39	13	18	37	68	34	38	43	8	13	0,44
1	1/2 - 13UNC	35	36	13	24	39	68	34	38	43	10	22	0,46
1,7	5/8 - 11UNC	35	42	13	31	43	68	34	38	52	13	55	0,54
2,5	3/4 - 10UNC	35	38	13	31	47	68	34	38	52	16	110	0,55
3,5	7/8 - 9UNC	53	57	20	37	69	105	49	56	71	19	150	1,88
4,5	1 - 8UNC	53	55	20	43	71	105	49	56	71	19	190	1,93

## ADAL Uzun Vidalı Döner Yataklı Kaldırma Mapası Grade 80

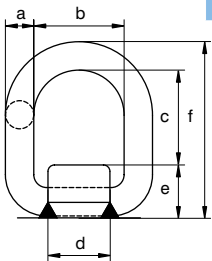
ADAL Rotating Hoist Ring Longer Length Grade 80



Çalışma Yüğü WLL	Ölçüler (mm) Dimensions										Anahtar Ölçüsü Hex Key (mm)	Tork Değeri Torque Value (nM)	Ağırlık (kg) Weight
	t	a	b	c	d	e	f	g	h	i			
0,4	M8 x 1,25	35	41	13	52	35	68	34	38	43	6	6,5	0,46
0,4	M8 x 1,25	35	41	13	92	35	68	34	38	43	6	6,5	0,47
0,7	M10 x 1,50	35	39	13	62	37	68	34	38	43	8	13	0,47
0,7	M10 x 1,50	35	39	13	125	37	68	34	38	43	8	13	0,50
1	M12 x 1,75	35	36	13	62	39	68	34	38	43	10	22	0,49
1	M12 x 1,75	35	36	13	125	39	68	34	38	43	10	22	0,53
1,6	M16 x 2,00	35	42	13	92	43	68	34	38	52	14	55	0,60
1,6	M16 x 2,00	35	42	13	172	43	68	34	38	52	14	55	0,71
2,5	M20 x 2,50	35	38	13	112	47	68	34	38	52	17	110	0,75
2,5	M20 x 2,50	35	38	13	172	47	68	34	38	52	17	110	0,87
4	M24 x 3,00	53	55	20	112	71	105	49	56	71	19	190	2,16
4	M24 x 3,00	53	55	20	172	71	105	49	56	71	19	190	2,33
5	M27 x 3,00	53	61	20	90	65	105	49	56	71	19	280	2,20
6,3	M30 x 3,50	53	61	20	90	65	105	49	56	71	19	380	2,27
6,3	M30 x 3,50	53	61	20	240	65	105	49	56	71	19	380	3,05
10	M36 x 4,00	71	87	30	110	84	146	68	77	98	19	600	5,72
12,5	M42 x 4,50	71	87	30	120	84	146	68	77	98	19	1000	6,07

## PAS Kaynaklanabilir Halka Grade 80

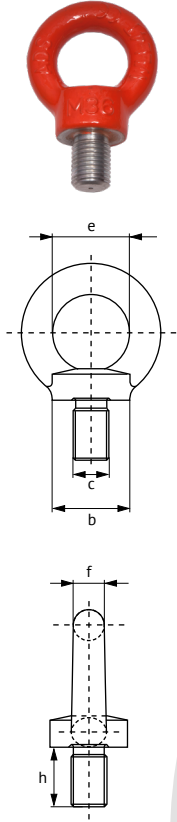
PAS Weld-on Transport Ring Grade 80



Çalışma Yüğü WLL	Ölçüler (mm) Dimensions						Ağırlık (kg) Weight
	t	a	b	c	d	e	
1,2	13	40	42	35	28	83	0,40
3,2	18	45	48	42	33	99	0,77
5,4	22	55	57	49	42	121	1,42
8,2	26	70	67	64	50	143	2,50
12,8	28	85	90	78	55	173	3,70
15,5	34	99	93	90	63	190	5,67

## AK-580 Erkek Aybolt

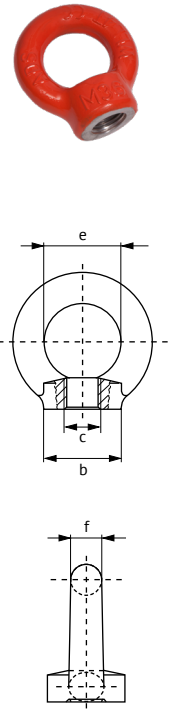
AK-580 Eyebolt



Çalışma Yüğü WLL t	Diş Çapı Trade Size	Ölçüler (mm) Dimensions				
		b	c	e	f	h
2	M27	66	27	56	24	39
2,5	M30	66	30	56	24	39
4	M36	67	36	67	28	48
6,3	M42	80	42	80	34	56
8	M48	95	48	95	39	65
10	M56	113	56	112	45	73
16	M64	125	64	125	50	85

## AK-582 Dişi Aybolt

AK-582 Eyenut

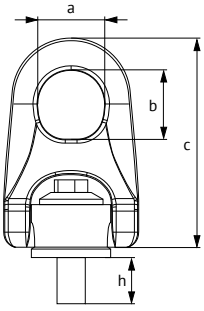


Çalışma Yüğü WLL t	Diş Çapı Trade Size	Ölçüler (mm) Dimensions			
		b	c	e	f
2	M27	66	27	56	24
2,5	M30	66	30	56	24
4	M36	67	36	67	28
6,3	M42	80	42	80	34
8	M48	95	48	95	39
10	M56	113	56	112	45
16	M64	125	64	125	50

## AK-400 Döner Yataklı Aybolt

AK-400 Double Swivel Eyebolt

ADS®

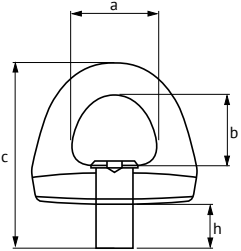


Çalışma Yüğü WLL	Diş Çapı Trade Size	Ölçüler (mm) Dimensions			
		a	b	c	h
t					
0,3	M8	27,5	33,5	88,5	15
0,6	M10	27,5	33,5	88,5	20
1	M12	27,5	33,5	88,5	20
1,3	M14	37,5	49	123,5	35
1,6	M16	37,5	49	123,5	35
2	M18	37,5	49	123,5	35
2,5	M20	37,5	49	123,5	35
4	M24	55,5	73	176,5	40
6,3	M30	55,5	73	176,5	40

## AK-450 Döner Başlıklı Ağır Tip Aybolt

AK-450 Heavy Duty Swivel Eyebolt

ADS®



Çalışma Yüğü WLL	Diş Çapı Trade Size	Ölçüler (mm) Dimensions				
		a	b	c	d	h
t						
0,3	M8	33	27	73	13	20
0,6	M10	33	27	73	13	20
1	M12	48	40	105	20	27
1,6	M16	48	40	105	20	27
2,5	M20	48	40	105	20	27
4	M24	72	60	145	30	31
6,3	M30	72	60	155	30	39
10	M36	103	86	215	44	45
12,5	M42	103	86	225	44	55
15	M48	103	86	235	44	65

