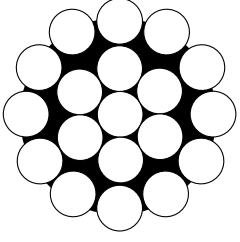


ÇELİK HALATLAR / STEEL WIRE ROPES

**1x19 Paslanmaz Çelik Halat (AISI 316/304)**

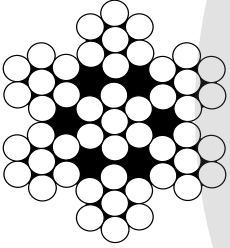
1x19 Stainless Steel Wire Rope (AISI 316/304)



Halat Çapı Rope Diameter	Birim Ağırlık Unit Weight	Tel Mukavemeti Tensile Strength	Minimum Kopma Kuvveti Minimum Breaking Load (MBL)
mm	kg/m	N/mm <sup>2</sup>	N
2,00	0,020	1570	336
3,00	0,045	1570	756
4,00	0,079	1570	1340
5,00	0,124	1570	2100
6,00	0,178	1570	3030
8,00	0,317	1570	5380
10,00	0,495	1570	8400
12,00	0,713	1570	12100

**7x7 Paslanmaz Çelik Halat (AISI 316/304)**

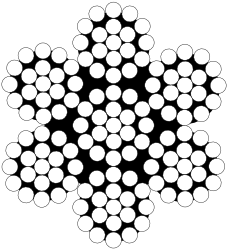
7x7 Stainless Steel Wire Rope (AISI 316/304)



Halat Çapı Rope Diameter	Birim Ağırlık Unit Weight	Tel Mukavemeti Tensile Strength	Minimum Kopma Kuvveti Minimum Breaking Load (MBL)
mm	kg/1000m	N/mm <sup>2</sup>	N
1,00	3,93	1770	690
1,20	5,60	1570	1200
1,50	8,80	1570	1670
1,80	12,70	1570	2510

**7x19 Paslanmaz Çelik Halat (AISI 316/304)**

7x19 Stainless Steel Wire Rope (AISI 316/304)

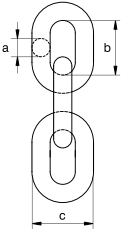


Halat Çapı Rope Diameter	Birim Ağırlık Unit Weight	Tel Mukavemeti Tensile Strength	Minimum Kopma Kuvveti Minimum Breaking Load (MBL)
mm	kg/m	N/mm <sup>2</sup>	N
2,00	0,017	1570	212
3,00	0,034	1570	477
4,00	0,061	1570	849
5,00	0,095	1570	1326
6,00	0,138	1570	1960
8,00	0,243	1570	3400
10,00	0,381	1570	5310
12,00	0,548	1570	7650

## ZİNCİRLER / CHAINS

### Paslanmaz Zincir (AISI 316/304)

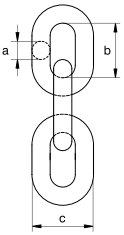
Stainless Steel Chain (AISI 316/304)



Halat Çapı (mm) Diameter	Uzunluk (mm) Length Inside	Genişlik Width Outside	Ağırlık Weight per meter m/kg
a	b	c	
2	7,6	8,8	0,12
3	16,0	11,0	0,17
4	16,0	14,0	0,32
5	18,5	17,0	0,50
6	18,5	20,0	0,75
8	24,0	26,0	1,35
10	28,0	34,0	2,25

### Paslanmaz Yük Zinciri (AISI 316L)

Stainless Steel Lifting Chain (AISI 316L)



Çap (mm) Nominal Size	Çalışma Yüğü WLL t	Ölçüler (mm) Dimensions		Metredeki Bakla Sayısı Links per Meter	Varil Uzunluğu Length per Drum m	Ağırlık Weight kg
		b	c			
6	0,7	18	21	55,56	100	0,78
8	1,2	24	29	41,67	100	1,30
10	1,6	30	34	33,33	100	2,14
13	2,7	39	45	25,64	100	3,64



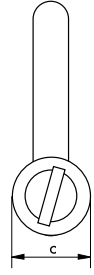
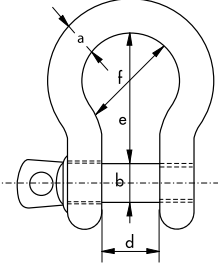
MAPALAR / SHACKLES

**Paslanmaz Omega Mapa Kilit (AISI 316)**

Stainless Steel Bow Shackles with Screw Pin (AISI 316)



R-7825



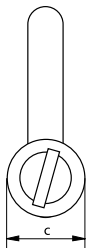
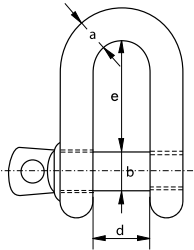
Gövde Çapı Diameter Bow	Pim Çapı Diameter Pin	Göz Çapı Diameter Eye	Ağız Açıklığı Width Inside	İç Uzunluk Length Inside	İç Çap Width Bow	Ağırlık Weight per 100 pcs
a	b	c	d	e	f	100 Adet/kg
mm	mm	mm	mm	mm	mm	
4	4	8	8	16	12	1,2
5	5	10	10	20	15	1,8
6	6	12	12	24	18	2,7
8	8	16	16	32	24	6,3
10	10	20	20	40	30	12,3
12	12	24	24	48	36	20,5
16	16	32	32	64	48	48
20	20	40	40	80	60	97
22	22	44	44	88	66	146
25	25	50	50	100	75	211
28	28	54	56	116	86	285

**U Tipi Paslanmaz Mapa Kilit (AISI 316)**

Stainless Steel Dee Shackles with Screw Pin (AISI 316)

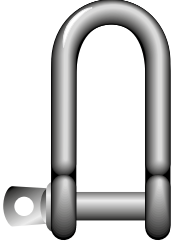


R-7821

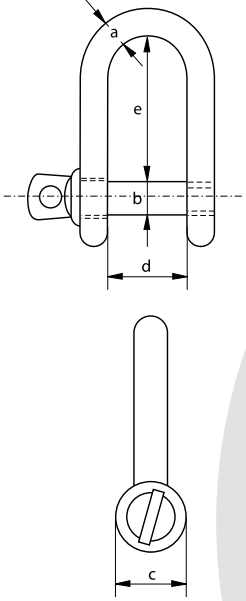


Gövde Çapı Diameter Bow	Pim Çapı Diameter Pin	Göz Çapı Diameter Eye	Ağız Açıklığı Width Inside	İç Uzunluk Length Inside	Ağırlık Weight per 100 pcs
a	b	c	d	e	100 Adet/kg
mm	mm	mm	mm	mm	
4	4	8	8	16	0,9
5	5	10	10	20	1,6
6	6	12	12	24	2,6
8	8	16	16	32	5,6
10	10	20	20	40	13
12	12	24	24	48	20
16	16	32	32	64	48
20	20	40	40	80	78
22	22	44	44	88	127
25	25	50	50	100	184
28	28	54	56	106	250

**U Tipi Uzun Paslanmaz Mapa Kilit (AISI 316)**  
Stainless Steel Long Dee Type (AISI 316)



R-7829



Gövde Çapı Diameter Bow	Pim Çapı Diameter Pin	Göz Çapı Diameter Eye	Ağız Açıklığı Width Inside	İç Uzunluk Length Inside	Ağırlık Weight per 100 pcs
a	b	c	d	e	100 Adet/kg
mm	mm	mm	mm	mm	
4	4	8	8	30	1
5	5	10	10	37	2
6	6	12	12	45	4
8	8	16	16	60	9
10	10	20	20	75	20
12	12	24	24	90	32

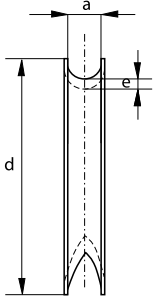
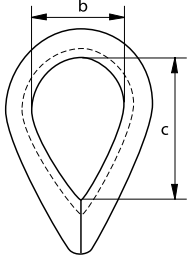
**RADANSA / THIMBLE**

**Paslanmaz Radansa (AISI 316/304)**

Stainless Steel Thimbles (AISI 316/304)



**R-7860**



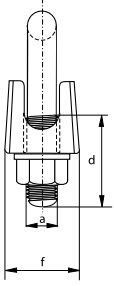
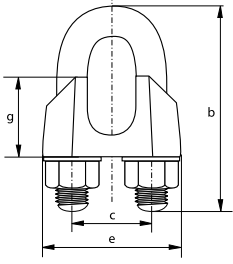
Oluk Geniřliđi Width Groove	İç Geniřlik Width Inside	İç Uzunluk Length Inside	Uzunluk Length	Kalınlık Thickness	Ađırlık Weight per 100 pcs
a	b	c	d	e	100 Adet/kg
mm	mm	mm	mm	mm	
2	9	15	23	1	0,2
2,5	9,5	15,7	24	1	0,2
3	10	16	25	1	0,3
4	11	17	28	1	0,5
5	13	20	32	1	0,5
6	16	25	39	1,2	0,8
7	18	28	40	1,2	1,0
8	20	32	49	1,4	1,2
10	26	40	55	1,9	3,4
12	28	45	70	2	4,5
14	34	56	80	2,2	7,3
16	37	62	85	2,5	12,2
18	42	65	95	2,5	15,1
20	45	78	115	3	19,0
22	50	88	125	3	22,3
24	58	96	135	4	40,5
26	66	105	140	4	49,7

**Paslanmaz Klemens (AISI 316/304)**

Stainless Steel Wire Rope Clip (AISI 316/304)



**R-7863**

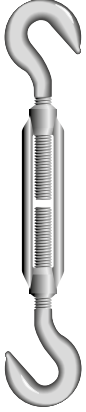


Halat Çapı Diameter Wire Rope	Çap Diameter	U-Blot Uzunluğu Length Bow	U-Bolt İç Genişliği Width Inside	Diş Boyu Length Thread	Taban Genişliği Length Base	Taban Kalınlığı Thickness Base	Gövde Yüksektği Height Base	Ağırlık Weight per 100 pcs
	a	b	c	d	e	f	g	
mm	mm	mm	mm	mm	mm	mm	mm	100 Adet/kg
3	4	20	9	12	21	10	10	1,4
4	4	22	9	12	21	10	10	1,4
5	5	24	11	13	23	11	10	1,5
6	5	28	13	15	26	12	11	2,1
8	6	34	16	19	30	14	15	3,5
10	8	42	19	22	34	18	17	6,1
13	10	55	24	30	42	23	21	13,0
16	12	63	29	33	50	26	26	21,0
19	12	75	32	38	54	29	30	26,0
22	14	85	37	44	61	33	34	40,0
26	14	95	41	45	65	35	37	44,0

GERDİRMELER / THURNBuckle

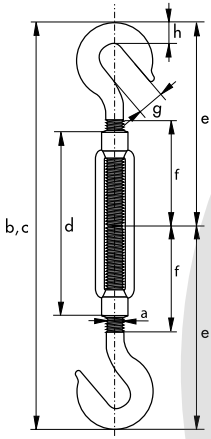
**Paslanmaz Kanca - Kanca Gerdirme (AISI 316)**

Stainless Steel Turnbuckle Hook-Hook (AISI 316)



R-7837

Diş Çap Diameter Thread	Pimler Arası Kapalı Uzunluk Length Closed Position	Pimler Arası Açık Uzunluk Length Open Position	Uzunluk Length Body	Uzunluk Length	Uzunluk Length	Kanca Açıklığı Opening Hook	Kalınlık Thickness	Birim Ağırlık Weight Each
a	b	c	d	e	f	g	h	kg
mm	mm	mm	mm	mm	mm	mm	mm	kg
M 5	120	170	70	58	33	8	5	0,04
M 6	150	210	90	73	43	9	6	0,08
M 8	200	290	120	98	56	11	8	0,16
M 10	240	355	150	117	71	12	9	0,27
M 12	310	470	200	157	95	14	11	0,51
M 16	390	590	250	186	116	16	15	1,20
M 20	440	675	300	214	139	18	19	1,90



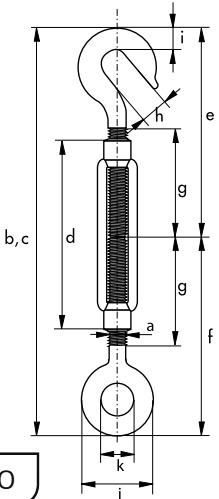
**Paslanmaz Kanca - Göz Gerdirme (AISI 316)**

Stainless Steel Turnbuckle Hook-Eye (AISI 316)



R-7838

Diş Çap Diameter Thread	Pimler Arası Kapalı Uzunluk Length Closed Position	Pimler Arası Açık Uzunluk Length Open Position	Uzunluk Length Body	Uzunluk Length	Uzunluk Length	Uzunluk Length	Kanca Açıklığı Opening Hook	Kalınlık Thickness	Göz Kalınlığı Diameter Eye Outside	Göz Geniřliđi Diameter Eye Inside	Birim Ağırlık Weight Each
a	b	c	d	e	f	g	h	i	j	k	kg
mm	mm	mm	mm	mm	mm	mm	mm	mm	mm	mm	kg
M 5	120	170	70	58	56	33	8	5	17	8	0,04
M 6	150	210	90	73	71	43	9	6	21	10	0,08
M 8	200	290	120	98	95	56	11	8	28	14	0,16
M 10	240	355	150	117	118	71	12	9	34	16	0,27
M 12	310	470	200	157	154	95	14	11	40	18	0,51
M 16	390	590	250	186	190	116	16	15	54	26	1,20
M 20	440	675	300	214	220	139	18	19	64	30	1,90



## GERDİRMELER / THURNBUCKLE

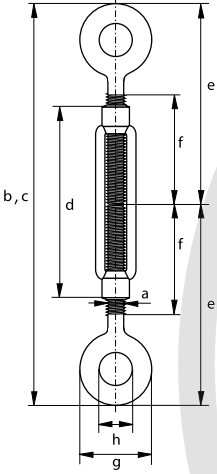
### Paslanmaz Göz - Göz Gerdirme (AISI 316)

Stainless Steel Turnbuckle Eye-Eye (AISI 316)



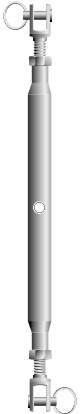
R-7839

Dış Çapı Diameter Thread	Pimler Arası Kapalı Uzunluk Length Closed Position	Pimler Arası Açık Uzunluk Length Open Position	Uzunluk Length Body	Uzunluk Length	Uzunluk Length	Göz Kalınlığı Diameter Eye Outside	Göz Genişliği Diameter Eye Outside	Birim Ağırlık Weight Each
a	b	c	d	e	f	g	h	
mm	mm	mm	mm	mm	mm	mm	mm	kg
M 5	120	170	70	56	33	17	8	0,04
M 6	150	210	90	71	43	21	10	0,08
M 8	200	290	120	95	56	28	14	0,16
M 10	240	355	150	118	71	34	16	0,27
M 12	310	470	200	154	95	40	18	0,51
M 16	390	590	250	190	116	54	26	1,20
M 20	440	675	300	220	139	64	30	1,90



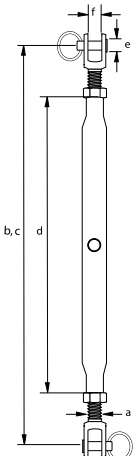
### Paslanmaz Liftin (AISI 316)

Stainless Steel Closed Body Turnbuckle (AISI 316)



R-7830

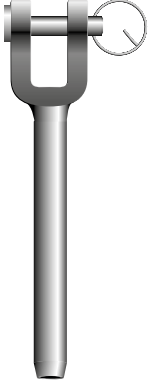
Dış Çapı Diameter Thread	Açık Uzunluk Length Open	Kapalı Uzunluk Length Closed	Uzunluk Length Body	Pim Çapı Diameter Pin	Çene Genişliği Width Jaw Inside	Ağırlık Weight per 100 pcs
a	b	c	d	e	f	
mm	mm	mm	mm	mm	mm	100 Adet/kg
M 5	190	125	80	5,2	6,0	6,5
M 6	210	155	95	6,2	7,5	8,1
M 8	240	180	105	8,7	10,0	15,9
M 10	270	220	125	9,7	12,0	29,9
M 12	360	255	150	12,7	14,0	53,2
M 14	385	270	165	12,7	14,0	64,0
M 16	450	320	190	16,0	16,0	116,0
M 20	450	355	210	19,0	20,0	145,0



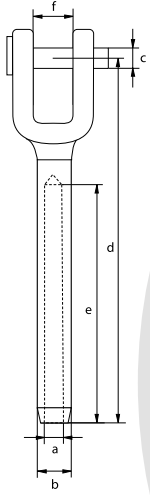
TERMİNALLER / TERMINALS

**Paslanmaz Çatal Terminal (AISI 316)**

Stainless Steel Fork Terminal (AISI 316)



R-7834



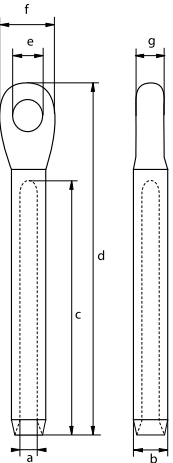
Halat Çapı Diameter Wire Rope	İç Çap Diameter Inside	Dış Çap Diameter Outside	Pim Çapı Diameter Pin	Uzunluk Length	İç Uzunluk Length Inside	Çene Geniřliđi Width Jaw	Ađırlık Weight per 100 pcs
	a	b	c	d	e	f	
mm	mm	mm	mm	mm	mm	mm	100 Adet/kg
3	3,3	6,3	5,2	65	32	7,5	2,3
4	4,3	7,5	6,2	77	40	10	4,9
5	5,3	9	8,7	88	57	12	7,2
6	6,6	12,5	9,7	106	63	14	13,9
7	7,5	14,2	12,6	116	70	14,5	18,1
8	8,3	16	14,6	145	85	16	21,6
9,5	10	17	16,5	150	87	17	48
10	10,5	17,8	16,5	150	89	17	52
12	12,5	20	19	204	105	25	67

**Paslanmaz Gözlü Terminal (AISI 316)**

Stainless Steel Eye Terminal (AISI 316)



R-7835



Halat Çapı Diameter Wire Rope	İç Çap Diameter Inside	Dış Çap Diameter Outside	İç Uzunluk Length Inside	Uzunluk Length	İç Çap Diameter Eye Inside	Dış Çap Diameter Eye Outside	Göz Kalınlıđı Thickness Eye	Ađırlık Weight per 100 pcs
	a	b	c	d	e	f	g	
mm	mm	mm	mm	mm	mm	mm	mm	100 Adet/kg
3	3,3	6,5	36	62	8	14	4	1,3
4	4,3	7,5	39	71	10	19	6	2,3
5	5,3	9	50	88	12	23	7	4,0
6	6,3	12,5	62	104	12,5	28	8	8,8
8	8,3	16	85	126	14,5	32	10	15,4
10	10,3	17,5	90	150	16,4	36	12	22,8

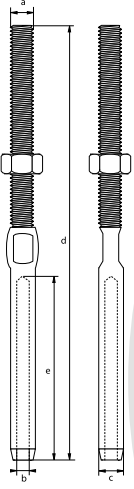
## TERMİNALLER / TERMINALS

### Paslanmaz Vidalı Terminal (AISI 316) Stainless Steel Threaded Terminal (AISI 316)



R-7836

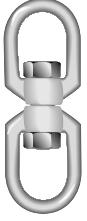
Halat Çapı Diameter Wire Rope	Diş Çapı Thread	İç Çap Diameter Inside	Diş Çap Diameter Outside	Uzunluk Length	İç Uzunluk Length Inside	Ağırlık Weight per 100 pcs
	a	b	c	d	e	
mm	mm	mm	mm	mm	mm	100 Adet/kg
3	M 6	3,3	6,3	100	39	2,7
4	M 8	4,3	7,5	117	45	5,4
5	M 10	5,3	9,0	130	51	7,8
6	M 12	6,3	12,0	162	64	15,1
8	M 16	8,3	16,0	195	76	23,2
10	M 20	10,3	18,0	230	89	59,0



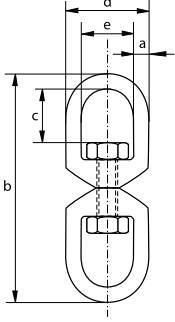
FIRDÖNDÜ / SWIVEL

**Paslanmaz Göz - Göz Firdöndü (AISI 316)**

Stainless Steel Eye - Eye Swivel (AISI 316)



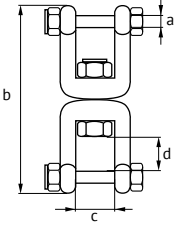
R-7877



Çap Diameter	Uzunluk Length	İç Uzunluk Length Inside	Kalınlık Width Outside	Genişlik Width Inside	Ağırlık Weight per 100 pcs
a	b	c	d	e	100 Adet/kg
mm	mm	mm	mm	mm	
5	60	13	23	13	3,4
6	65	15	26	15	5,1
8	90	22	35	20	13,1
10	115	27	44	24	26
13	154	35	57	32	58
16	188	45	71	39	105
19	229	50	84	41	220

**Paslanmaz Çatal - Çatal Firdöndü (AISI 316)**

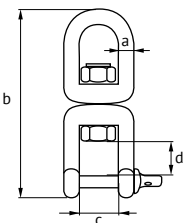
Stainless Steel Fork - Fork Swivel (AISI 316)



Çap Diameter	Uzunluk Length	Ağız Açıklığı Jaw Opening	İç Uzunluk Inside Length	Ağırlık Weight per 100 pcs
a	b	c	d	100 Adet/kg
mm	mm	mm	mm	
5	60	10	11	3,4
6	66	12	11	5,1
8	64	16	16	13,1
10	118	20	22	26
13	152	26	28	58
16	188	32	37	105
19	229	38	45	220

**Paslanmaz Göz - Çatal Firdöndü (AISI 316)**

Stainless Steel Eye - Fork Swivel (AISI 316)



Çap Diameter	Uzunluk Length	Ağız Açıklığı Jaw Opening	İç Uzunluk Inside Length	Ağırlık Weight per 100 pcs
a	b	c	d	100 Adet/kg
mm	mm	mm	mm	
5	60	11	10	3,4
6	65	12	12	5,1
8	90	16	16	13,1
10	115	22	20	26
13	154	28	26	58
16	188	37	32	105
19	231	44	38	220

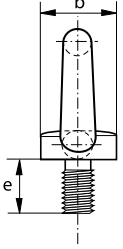
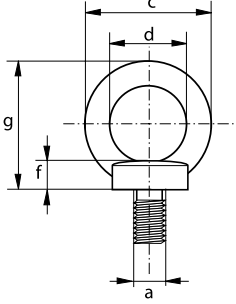
## AYBOLTLAR / EYES

### Paslanmaz Erkek Aybolt DIN 580 (AISI 316)

Stainless Steel Eye Bolt DIN 580 (AISI 316)



R-7840



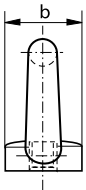
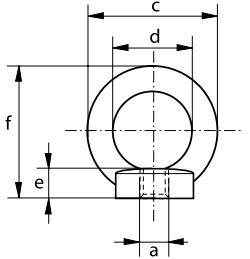
Dış Çapı Diameter Thread	Taban Çapı Diameter Base	Göz Kalınlığı Diameter Eye Outside	Göz Geniřliđi Diameter Eye Inside	Dış Uzunluđu Length Thread	Taban Kalınlığı Thickness Base	Yükseklik Height	Ağırlık Weight per 100 pcs
a	b	c	d	e	f	g	100 Adet/kg
mm	mm	mm	mm	mm	mm	mm	
M 6	20	36	20	13,0	6	36	3,0
M 8	20	36	20	13,0	6	36	6,0
M 10	25	45	25	17,0	8	45	10,3
M 12	30	54	30	20,5	10	53	17,7
M 16	35	63	35	27,0	12	62	28,0
M 20	40	72	40	30,0	14	71	45,0
M 24	50	90	50	36,0	18	90	74,0

### Paslanmaz Diři Aybolt DIN 582 (AISI 316)

Stainless Steel Eye Nuts DIN 582 (AISI 316)



R-7842

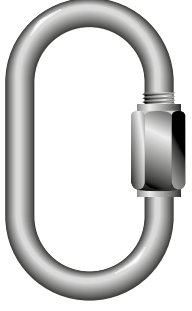


Dış Çapı Diameter Thread	Taban Çapı Diameter Base	Göz Kalınlığı Diameter Eye Outside	Göz Geniřliđi Diameter Eye Inside	Taban Kalınlığı Thickness Base	Yükseklik Height	Ağırlık Weight per 100 pcs
a	b	c	d	e	f	100 Adet/kg
mm	mm	mm	mm	mm	mm	
M 6	20	36	20	8,5	36	4,2
M 8	20	36	20	8,5	36	5,2
M 10	25	45	25	10,0	45	9,4
M 12	30	54	30	11,0	53	14,8
M 16	35	63	35	13,0	62	23,7

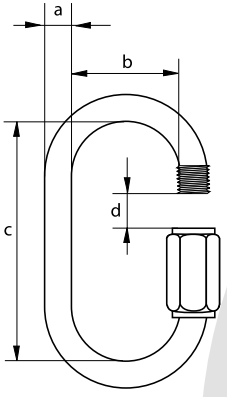
KARABİNALAR / CARABINE HOOKS

**Paslanmaz Ek Bakla (AISI 316)**

Stainless Steel Quick Link (AISI 316)



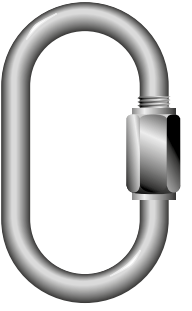
R-7873



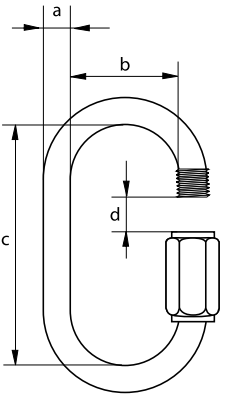
Çap Diameter	İç Genişlik Width Inside	İç Uzunluk Length Inside	Ağız Açıklığı Opening	Minimum Kopma Yüğü Minimum Breaking Load	Ağırlık Weight per 100 pcs
a	b	c	d		
mm	mm	mm	mm	kg	100 Adet/kg
3,5	10	29	5	155	0,9
4	12	32	5,5	450	1,2
5	13	39	6,5	585	2,0
6	14	46	7,5	790	3,3
7	16	51	8,5	1085	5,3
8	17	59	10,5	1380	7,5
9	17	64	11,5	1790	10,3
10	20	70	12,5	2085	13,7
12	23	83	14,5	2265	22,5

**Paslanmaz Geniş Ağızlı Ek Bakla (AISI 316)**

Stainless Steel Quick Link with Enlarged Opening (AISI 316)



R-7874

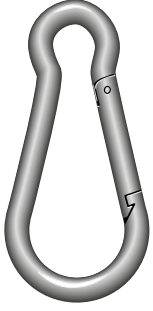


Çap Diameter	İç Genişlik Width Inside	İç Uzunluk Length Inside	Ağız Açıklığı Opening	Minimum Kopma Yüğü Minimum Breaking Load	Ağırlık Weight per 100 pcs
a	b	c	d		
mm	mm	mm	mm	kg	kg
3,5	10	40	10	155	1,2
5	14	52	14	585	2,6
6	16	60	16	790	4,0
8	18	74	18	1380	9,1
10	20	85	20	2085	15,9
12	23	98	23	2265	30,4
14	27	116	26	2540	40,2

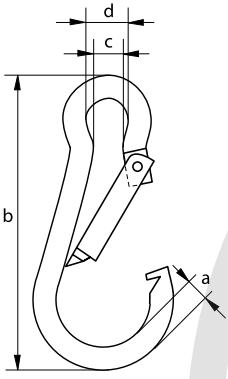
## KARABİNALAR / CARABINE HOOKS

### Paslanmaz Karabina (AISI 316)

Stainless Steel Carabine Hook (AISI 316)



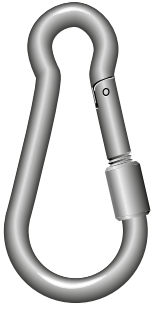
R-7872



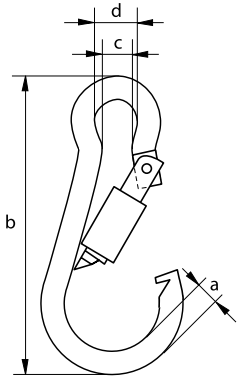
Çap Diameter	Uzunluk Length	İç Genişlik Width Inside	İç Genişlik Width Inside	Minimum Kopma Yüğü Minimum Breaking Load	Ağırlık Weight per 100 pcs
a mm	b mm	c mm	d mm		
4	40	5	7	70	0,8
5	50	7	8	110	1,5
6	60	7	9	132	2,6
7	70	9	10	198	2,6
8	80	11	12	330	4,4
9	90	11	12	363	6,4
10	100	12	15	506	12,2
11	120	14	18	660	12,5
12	140	16	20	748	25,0
13	160	20	22	880	35,0
14	180	20	22	946	35,0

### Paslanmaz Vidalı Karabina (AISI 316)

Stainless Steel Carabine Hook with Screw Nut (AISI 316)



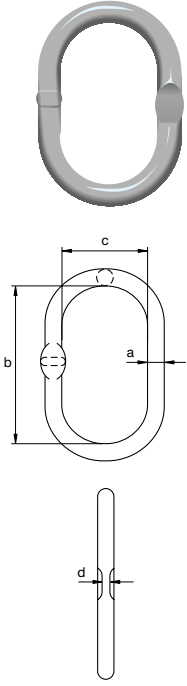
R-7876



Çap Diameter	Uzunluk Length	İç Genişlik Width Inside	İç Genişlik Width Inside	Minimum Kopma Yüğü Minimum Breaking Load	Ağırlık Weight per 100 pcs
a mm	b mm	c mm	d mm		
4	40	5	7	70	0,9
5	50	7	8	110	1,6
6	60	7	9	132	2,8
7	70	9	10	198	4,4
8	80	11	12	330	6,4
9	90	11	12	363	9,3
10	100	12	15	506	12,5
11	120	14	18	660	18,7
12	140	16	20	748	25,0
13	160	20	22	880	35,0
14	180	20	22	946	50,0

**MSI Paslanmaz Sapan Halkası 1 ve 2 Bacak için (AISI 316L)**

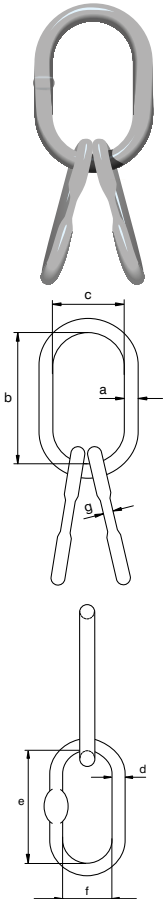
MSI Stainless Steel Master Link for 1 and 2 Leg Sling (AISI 316L)



Uygun Zincir Çapı 1 Bacak için Diameter Chain 1 Leg	Uygun Zincir Ölçüsü 2 Bacak için Diameter Chain 2 Legs		Çalışma Yükü WLL t	Ölçüler (mm) Dimensions				Ağırlık Weight kg
	$\beta \leq 45^\circ$	$\beta \leq 60^\circ$		a	b	c	d	
6	6	6	1,00	13	110	60	6	0,34
8	6	8	1,25	16	110	60	6	0,53
10	8	10	2,00	18	135	75	8	0,82
13	10	13	3,20	22	160	90	10	1,45
16	13	16	5,00	26	180	100	13	2,29

**MTSI Paslanmaz Sapan Halkası 3 ve 4 Bacak için (AISI 316L)**

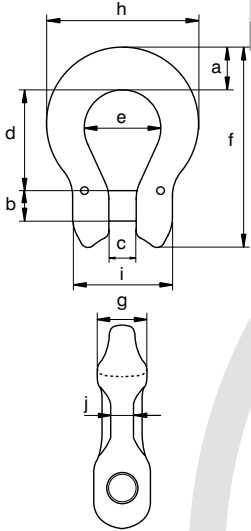
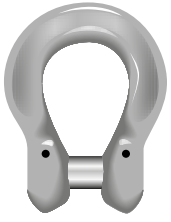
MTSI Stainless Steel Master Link Assembly for 3 and 4 Leg Sling (AISI 316L)



Uygun Zincir Çapı 3 ve 4 Bacak için Diameter Chain 3/4 Legs	Çalışma Yükü WLL t	Ölçüler (mm) Dimensions								Ağırlık Weight kg
		a	b	c	d	e	f	g		
6	1,60	18	135	75	13	54	25	6	1,17	
8	2,65	22	160	90	16	70	34	8	2,17	
10	4,25	26	180	100	18	85	40	8	3,34	
13	6,70	32	200	110	22	115	50	13	5,99	

## COI Paslanmaz Pimli Bağlantı Halkası (AISI 316L)

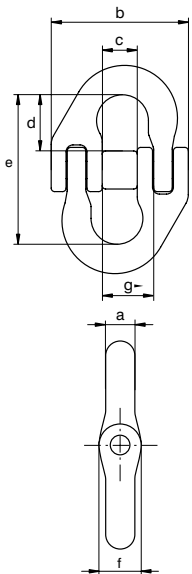
COI Stainless Steel Omega Link (AISI 316L)



Uygun Zincir Çapı (mm) For Chain Diameter	Çalışma Yükü WLL t	Ölçüler (mm) Dimensions										Ağırlık Weight kg
		a	b	c	d	e	f	g	h	i	j	
5	0,5	14	6	7	26	20	53	13	41	28	6	0,07
6	0,7	14	8	7	25	20	53	13	41	28	6	0,07
7	1,2	20	9	9	34	24	71	16	55	32	8	0,18
8	1,2	20	9	9	34	24	71	16	55	32	8	0,18
10	1,6	19	13	12	40	31	82	17	63	42	11	0,28
13	2,7	25	16	15	51	40	106	20	84	54	14	0,64

## MJI Paslanmaz Bağlantı Halkası (AISI 316L)

MJI Stainless Steel Connecting Link (AISI 316L)



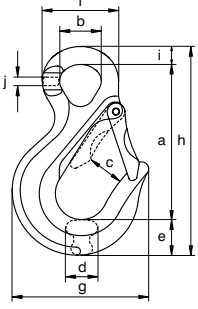
Uygun Zincir Çapı (mm) For Chain Diameter	Çalışma Yükü WLL t	Ölçüler (mm) Dimensions							Ağırlık Weight kg
		a	b	c	d	e	f	g	
6	0,7	8	42	11	20	52	11	15	0,09
7	1,2	9	53	14	20	55	13	19	0,16
8	1,2	9	53	14	20	55	13	19	0,16
10	1,6	10	66	18	23	64	18	23	0,28
13	2,7	14	83	21	32	85	24	28	0,64

**C50I Paslanmaz Emniyet Mandallı Gözlu Kanca (AISI 316L)**

C50I Stainless Steel Eye Sling Hook (AISI 316L)



Uygun Zincir Çapı (mm) For Chain Diameter	Çalışma Yükü WLL t	Ölçüler (mm) Dimensions										Ağırlık Weight kg
		a	b	c	d	e	f	g	h	i	j	
6	0,7	84	23	26	15	20	43	72	114	10	6	0,28
7	1,2	103	26	30	20	24	51	87	139	12	8	0,56
8	1,2	103	26	30	20	24	51	87	139	12	8	0,56
10	1,6	128	35	33	24	29	65	106	172	15	10	1,09
13	2,7	152	41	37	32	39	77	133	209	18	12	1,98

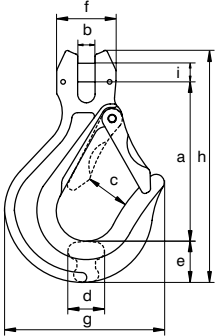


**C50I Paslanmaz Emniyet Mandallı Pimli Kanca (AISI 316L)**

C50I Stainless Steel Clevis Sling Hook (AISI 316L)



Uygun Zincir Çapı (mm) For Chain Diameter	Çalışma Yükü WLL t	Ölçüler (mm) Dimensions									Ağırlık Weight kg
		a	b	c	d	e	f	g	h	i	
5	0,5	76	7	26	15	20	28	72	108	6	0,29
6	0,7	75	7	26	15	20	28	72	108	8	0,29
7	1,2	95	9	30	20	24	32	87	136	9	0,58
8	1,2	95	9	30	20	24	32	87	136	9	0,58
10	1,6	113	12	33	24	29	42	106	164	13	1,10
13	2,7	138	15	37	32	39	54	133	208	16	1,86

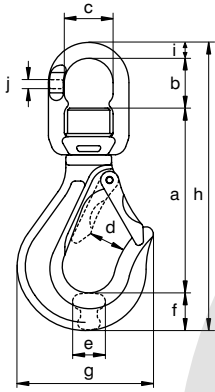


## CSEI Paslanmaz Firdöndü Kanca (AISI 316L)

CSEI Stainless Steel Swivel Sling Hook (AISI 316L)



Uygun Zincir Çapı (mm) For Chain Diameter	Çalışma Yükü WLL t	Ölçüler (mm) Dimensions										Ağırlık Weight kg
		a	b	c	d	e	f	g	h	i	j	
6	0,7	100	33	32	26	15	20	72	164	12	6	0,55
7	1,2	126	40	37	30	20	24	87	200	14	8	1,00
8	1,2	126	40	37	30	20	24	87	200	14	8	1,00
10	1,6	159	47	47	33	24	29	106	250	16	11	1,90
13	2,7	189	59	58	37	32	39	133	307	21	14	3,42

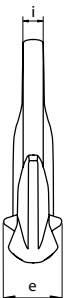
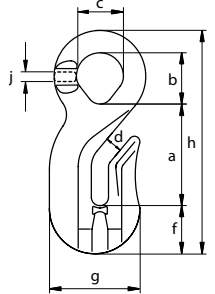


## CROI Paslanmaz Gözlü Kısaltma Kancası (AISI 316L)

CROI Stainless Steel Eye Grab Hook (AISI 316L)

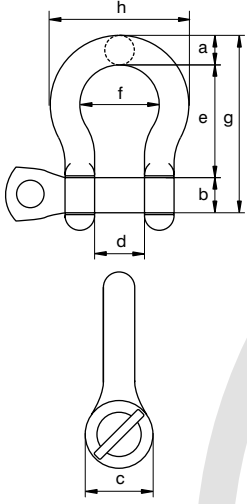


Uygun Zincir Çapı (mm) For Chain Diameter	Çalışma Yükü WLL t	Ölçüler (mm) Dimensions										Ağırlık Weight kg
		a	b	c	d	e	f	g	h	i	j	
6	0,7	41	24	23	8	24	20	42	94	9	6	0,25
7	1,2	53	27	26	10	33	23	53	115	10	8	0,32
8	1,2	53	27	26	10	33	23	53	115	10	8	0,32
10	1,6	65	38	36	12	40	29	66	146	14	10	0,53
13	2,7	83	42	41	15	56	40	88	183	16	12	1,96



**MLVI Paslanmaz Mapa Kilit (AISI 316)**

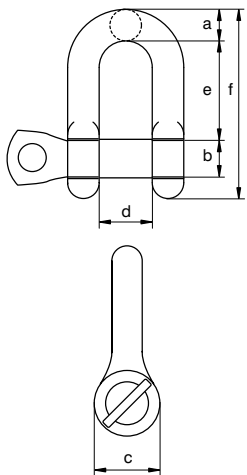
MLVI Stainless Steel Bow Shackle with Screw Pin (AISI 316)



Çalışma Yüğü WLL (t max)	Ölçüler (mm) Dimensions								Ağırlık (kg) Weight
	a	b	c	d	e	f	g	h	
0,4	8	8	16	16	32	25	56	41	0,06
0,6	10	10	19	20	40	28	67	48	0,12
0,9	12	12	24	25	48	36	79	59	0,20
1,5	13	16	31	24	52	35	87	60	0,32
2,5	16	20	38	28	64	42	108	71	0,58
3,0	19	22	44	32	72	50	125	87	0,96
4,0	22	25	50	37	74	60	145	101	1,46
6,0	25	30	57	40	94	67	157	115	2,09

**MDVI Paslanmaz Mapa Kilit (AISI 316)**

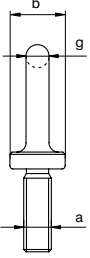
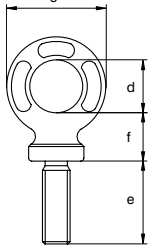
MDVI Stainless Steel Dee Shackle with Screw Pin (AISI 316)



Çalışma Yüğü WLL (t max)	Ölçüler (mm) Dimensions						Ağırlık (kg) Weight
	a	b	c	d	e	f	
0,4	8	8	16	16	32	52	0,06
0,6	10	10	19	20	40	64	0,11
0,9	12	12	24	25	48	78	0,19
1,5	13	16	31	24	52	90	0,30
2,5	16	20	38	28	64	110	0,57
3,0	19	22	44	32	72	124	0,90
4,0	22	25	50	37	74	134	1,33
6,0	25	30	57	40	94	162	1,98

## ALDINI Paslanmaz Erkek Aybolt (AISI 316L)

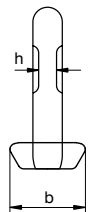
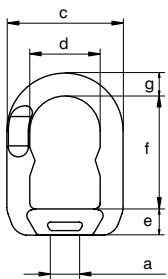
ALDINI Stainless Steel Eye Bolt Length as DIN 580 (AISI 316L)



Çalışma Yüğü WLL (t max)	Ölçüler (mm) Dimensions							Ağırlık (kg) Weight
	a	b	c	d	e	f	g	
0,2	M8 x 1,25	20	34	20	13	17	7	0,05
0,4	M10 x 1,50	20	38	22	17	19	8	0,08
0,6	M12 x 1,75	25	47	26	21	23	10	0,14
0,8	M14 x 2,00	30	57	29	27	28	14	0,26
1	M16 x 2,00	36	65	35	27	30	14	0,37
1,5	M18 x 2,50	36	65	35	30	30	14	0,49
2	M20 x 2,50	40	73	39	30	34	16	0,55
2,5	M22 x 2,50	42	82	44	35	38	19	0,78
3	M24 x 3,00	55	95	54	36	40	20	1,12

## ELI Paslanmaz Dişi Aybolt (AISI 316L)

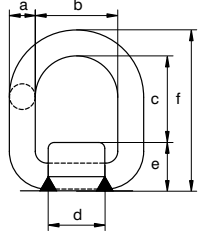
ELI Stainless Steel Eye Nut (AISI 316L)



Çalışma Yüğü WLL (t max)	Ölçüler (mm) Dimensions								Ağırlık (kg) Weight
	a	b	c	d	e	f	g	h	
0,12	M6 x 1,00	31	51	30	14	44	11	6	0,15
0,2	M8 x 1,25	31	51	30	14	44	11	6	0,15
0,4	M10 x 1,50	31	51	30	14	44	11	6	0,15
0,6	M12 x 1,75	39	56	32	15	48	12	6	0,23
0,8	M14 x 2,00	39	56	32	15	48	12	6	0,23
1	M16 x 2,00	44	65	37	17	60	14	8	0,37
1,5	M18 x 2,50	44	65	37	17	60	14	8	0,37
2	M20 x 2,50	44	65	37	17	60	14	8	0,37
2,5	M22 x 2,50	52	79	48	21	75	16	11	0,63
3	M24 x 3,00	52	79	48	21	75	16	11	0,63
3,5	M27 x 3,00	52	79	48	21	75	16	11	0,63

**PASI Paslanmaz Kaynaklı Halka (AISI 316)**

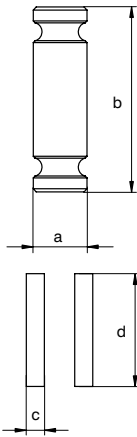
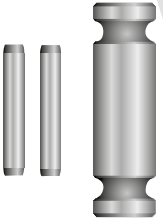
PASI Stainless Steel Weld-on Transport Ring (AISI 316)



Çalışma Yüğü WLL (t max)	Ölçüleri (mm) Dimensions						Ağırlık (kg) Weight
	a	b	c	d	e	f	
0,75	13	40	42	35	28	83	0,4
1,25	18	45	48	42	33	99	0,8
3,20	22	55	57	49	42	121	1,4
5,00	26	70	67	64	50	143	2,5

**ACI Paslanmaz Pim Takımı (AISI 316L)**

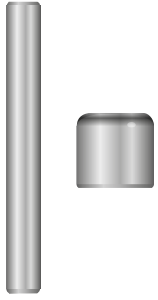
ACI Stainless Steel Spare Kit for Clevis Fittings (AISI 316L)



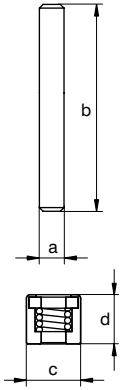
Pim Çapı (mm) Diameter Pin	Pim Uzunluğu (mm) Length Pin	Pim Çapı (mm) Diameter Pin	Pim Uzunluğu (mm) Length Pin	Ağırlık (kg) Weight
a	b	c	d	
6	28	3	14	0,01
8	28	3	14	0,01
9	32	3	22	0,02
13	41	4	24	0,04
16	53	4	32	0,08

## RMJI Paslanmaz Bağlantı Halkaları için Pim Takımı (AISI 316L)

RMJI Spare Kit for Connecting Link, Stainless Steel (AISI 316L)

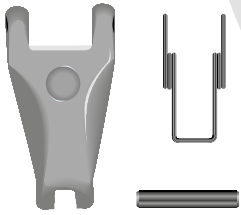


Genişlik (mm) Width	Uzunluk (mm) Length	Pim Çapı (mm) Diameter Pin	Pim Uzunluğu (mm) Length Pin	Ağırlık (kg) Weight
a	b	c	d	
5	43	11	10	0,01
6	54	13	14	0,02
8	66	15	18	0,02
10	84	20	21	0,08



## LFI Paslanmaz Emniyet Mandalı Takımı (AISI 316L)

LFI Stainless Steel Forged Latch (AISI 316L)



Çap (mm) Diameter	Genişlik (mm) Width	Pim Çapı (mm) Diameter Pin	Pim Uzunluğu (mm) Length Pin	Ağırlık (kg) Weight
a	b	c	d	
24	44	4	24	0,04
31	59	5	30	0,05
41	65	5	40	0,10
41	79	6	40	0,20

